

Anti-SEZ6 Reference Antibody (Abbv-011)
Recombinant Antibody
Catalog # APR10739**Specification**

Anti-SEZ6 Reference Antibody (Abbv-011) - Product Information

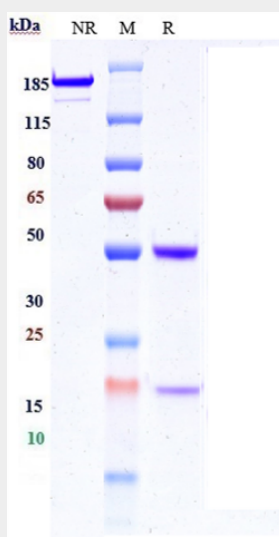
Application	FC, Kinetics, Animal Model
Primary Accession	Q53EL9
Reactivity	Human
Clonality	Monoclonal
Isotype	IgG1
Calculated MW	150 KDa

Anti-SEZ6 Reference Antibody (Abbv-011) - Additional Information**Target/Specificity**
SEZ6**Endotoxin**
< 0.001EU/ µg,determined by LAL method.**Conjugation**
Unconjugated**Expression system**
CHO Cell**Format**
Purified monoclonal antibody supplied in PBS, pH6.0, without preservative.This antibody is purified through a protein A column.**Anti-SEZ6 Reference Antibody (Abbv-011) - Protein Information****Name** SEZ6**Function**
May play a role in cell-cell recognition and in neuronal membrane signaling. Seems to be important for the achievement of the necessary balance between dendrite elongation and branching during the elaboration of a complex dendritic arbor. Involved in the development of appropriate excitatory synaptic connectivity (By similarity).**Cellular Location**
Cell membrane; Single-pass type I membrane protein. Note=Localized on dendrites and in the synaptic and postsynaptic fraction.**Anti-SEZ6 Reference Antibody (Abbv-011) - Protocols**

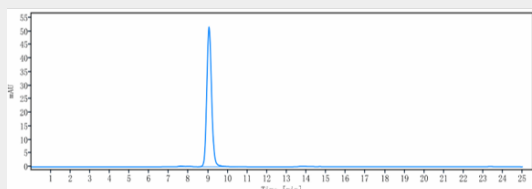
Provided below are standard protocols that you may find useful for product applications.

- [Western Blot](#)
- [Blocking Peptides](#)
- [Dot Blot](#)
- [Immunohistochemistry](#)
- [Immunofluorescence](#)
- [Immunoprecipitation](#)
- [Flow Cytometry](#)
- [Cell Culture](#)

Anti-SEZ6 Reference Antibody (Abbv-011) - Images



Anti-SEZ6 Reference Antibody (Abbv-011) on SDS-PAGE under reducing (R) condition. The gel was stained with Coomassie Blue. The purity of the protein is greater than 90%



The purity of Anti-SEZ6 Reference Antibody (Abbv-011) is more than 95% ,determined by SEC-HPLC.