

**Anti-TRP1 / TYRP1 Reference Antibody (flanvotumab)
Recombinant Antibody
Catalog # APR10749****Specification**

Anti-TRP1 / TYRP1 Reference Antibody (flanvotumab) - Product Information

Application	FC, Kinetics, Animal Model
Primary Accession	P48995
Reactivity	Human, Mouse
Clonality	Monoclonal
Isotype	IgG1
Calculated MW	145 KDa

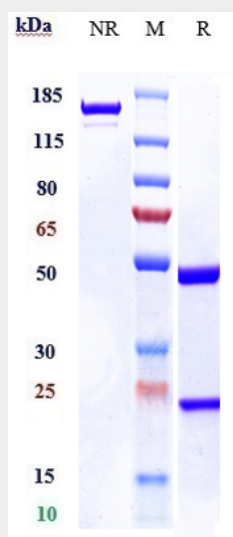
Anti-TRP1 / TYRP1 Reference Antibody (flanvotumab) - Additional Information**Target/Specificity**
TRP1 / TYRP1**Endotoxin**
< 0.001EU/ µg,determined by LAL method.**Conjugation**
Unconjugated**Expression system**
CHO Cell**Format**
Purified monoclonal antibody supplied in PBS, pH6.0, without preservative.This antibody is purified through a protein A column.**Anti-TRP1 / TYRP1 Reference Antibody (flanvotumab) - Protein Information****Name** TRPC1**Synonyms** TRP1**Function**
Forms a receptor-activated non-selective calcium permeant cation channel. Probably is operated by a phosphatidylinositol second messenger system activated by receptor tyrosine kinases or G-protein coupled receptors. Also activated by intracellular calcium store depletion.**Cellular Location**
Cell membrane; Multi-pass membrane protein**Tissue Location**
Seems to be ubiquitous.

Anti-TRP1 / TYRP1 Reference Antibody (flanvotumab) - Protocols

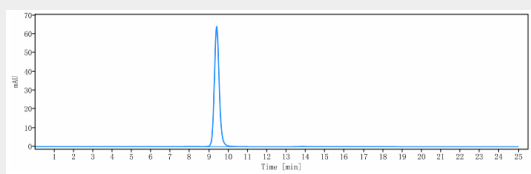
Provided below are standard protocols that you may find useful for product applications.

- [Western Blot](#)
- [Blocking Peptides](#)
- [Dot Blot](#)
- [Immunohistochemistry](#)
- [Immunofluorescence](#)
- [Immunoprecipitation](#)
- [Flow Cytometry](#)
- [Cell Culture](#)

Anti-TRP1 / TYRP1 Reference Antibody (flanvotumab) - Images



Anti-TRP1 / TYRP1 Reference Antibody (flanvotumab) on SDS-PAGE under reducing (R) condition. The gel was stained with Coomassie Blue. The purity of the protein is greater than 95%



The purity of Anti-TRP1 / TYRP1 Reference Antibody (flanvotumab) is more than 95% ,determined by SEC-HPLC.