

**Anti-Albumin Reference Antibody (Numab patent anti-HSA)
Recombinant Antibody
Catalog # APR10768****Specification**

Anti-Albumin Reference Antibody (Numab patent anti-HSA) - Product Information

Application	FC, Kinetics, Animal Model
Primary Accession	P02768
Reactivity	Human, Mouse
Clonality	Monoclonal
Isotype	IgG1
Calculated MW	150 KDa

Anti-Albumin Reference Antibody (Numab patent anti-HSA) - Additional Information**Target/Specificity**
Albumin**Endotoxin**
< 0.001EU/ µg,determined by LAL method.**Conjugation**
Unconjugated**Expression system**
CHO Cell**Format**
Purified monoclonal antibody supplied in PBS, pH6.0, without preservative.This antibody is purified through a protein A column.**Anti-Albumin Reference Antibody (Numab patent anti-HSA) - Protein Information****Name** ALB**Function**
Binds water, Ca(2+), Na(+), K(+), fatty acids, hormones, bilirubin and drugs (Probable). Its main function is the regulation of the colloidal osmotic pressure of blood (Probable). Major zinc transporter in plasma, typically binds about 80% of all plasma zinc (PubMed:19021548). Major calcium and magnesium transporter in plasma, binds approximately 45% of circulating calcium and magnesium in plasma (By similarity). Potentially has more than two calcium-binding sites and might additionally bind calcium in a non-specific manner (By similarity). The shared binding site between zinc and calcium at residue Asp-273 suggests a crosstalk between zinc and calcium transport in the blood (By similarity). The rank order of affinity is zinc > calcium > magnesium (By similarity). Binds to the bacterial siderophore enterobactin and inhibits enterobactin-mediated iron uptake of E.coli from ferric transferrin, and may thereby limit the utilization of iron and growth of enteric bacteria such as E.coli (PubMed:6234017).

target="_blank">6234017). Does not prevent iron uptake by the bacterial siderophore aerobactin (PubMed:6234017).

Cellular Location
Secreted.

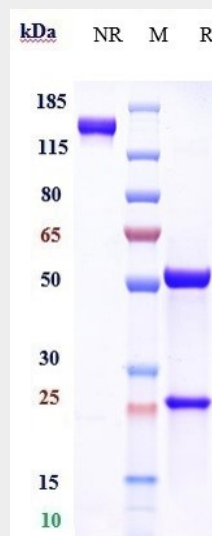
Tissue Location
Plasma.

Anti-Albumin Reference Antibody (Numab patent anti-HSA) - Protocols

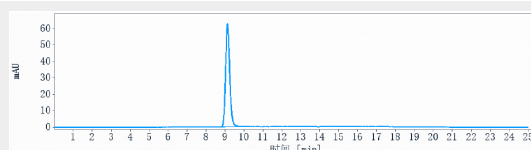
Provided below are standard protocols that you may find useful for product applications.

- [Western Blot](#)
- [Blocking Peptides](#)
- [Dot Blot](#)
- [Immunohistochemistry](#)
- [Immunofluorescence](#)
- [Immunoprecipitation](#)
- [Flow Cytometry](#)
- [Cell Culture](#)

Anti-Albumin Reference Antibody (Numab patent anti-HSA) - Images



Anti-Albumin Reference Antibody (Numab patent anti-HSA) on SDS-PAGE under reducing (R) condition. The gel was stained with Coomassie Blue. The purity of the protein is greater than 90%



The purity of Anti-Albumin Reference Antibody (Numab patent anti-HSA) is more than 95%, determined by SEC-HPLC.