

**Anti-CA9 / CAIX Reference Antibody (girentuximab-MMAE)
Recombinant Antibody
Catalog # APR10795****Specification**

Anti-CA9 / CAIX Reference Antibody (girentuximab-MMAE) - Product Information

Application	FC, Kinetics, Animal Model
Primary Accession	Q16790
Reactivity	Human
Clonality	Monoclonal
Isotype	IgG1
Calculated MW	150 KDa

Anti-CA9 / CAIX Reference Antibody (girentuximab-MMAE) - Additional Information**Target/Specificity**
CA9 / CAIX**Endotoxin**
< 0.001EU/ µg,determined by LAL method.**Conjugation**
Unconjugated**Expression system**
CHO Cell**Format**
Purified monoclonal antibody supplied in PBS, pH6.0, without preservative.This antibody is purified through a protein A column.**Anti-CA9 / CAIX Reference Antibody (girentuximab-MMAE) - Protein Information****Name** CA9**Synonyms** G250, MN**Function**
Catalyzes the interconversion between carbon dioxide and water and the dissociated ions of carbonic acid (i.e. bicarbonate and hydrogen ions).**Cellular Location**
Nucleus. Nucleus, nucleolus. Cell membrane; Single-pass type I membrane protein. Cell projection, microvillus membrane; Single-pass type I membrane protein. Note=Found on the surface microvilli and in the nucleus, particularly in nucleolus**Tissue Location**
Expressed primarily in carcinoma cells lines. Expression is restricted to very few normal tissues

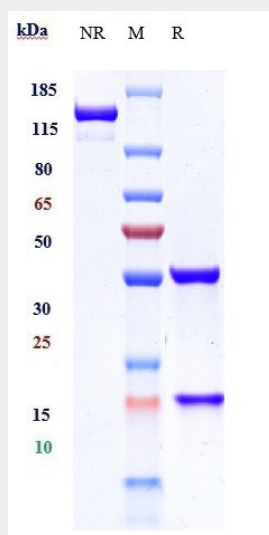
and the most abundant expression is found in the epithelial cells of gastric mucosa

Anti-CA9 / CAIX Reference Antibody (girentuximab-MMAE) - Protocols

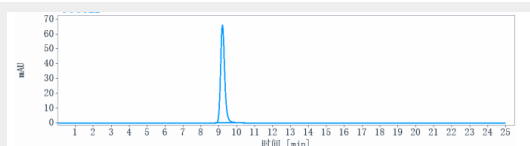
Provided below are standard protocols that you may find useful for product applications.

- [Western Blot](#)
- [Blocking Peptides](#)
- [Dot Blot](#)
- [Immunohistochemistry](#)
- [Immunofluorescence](#)
- [Immunoprecipitation](#)

Anti-CA9 / CAIX Reference Antibody (girentuximab-MMAE) - Images



Anti-CA9 / CAIX Reference Antibody (girentuximab-MMAE) on SDS-PAGE under reducing (R) condition. The gel was stained with Coomassie Blue. The purity of the protein is greater than 90%



The purity of Anti-CA9 / CAIX Reference Antibody (girentuximab-MMAE) is more than 95%, determined by SEC-HPLC.