

**Anti-CD5 Reference Antibody (Magenta patent anti-CD5)  
Recombinant Antibody  
Catalog # APR10810****Specification**

---

**Anti-CD5 Reference Antibody (Magenta patent anti-CD5) - Product Information**

Application	FC, Kinetics, Animal Model
Primary Accession	<a href="#">P06127</a>
Reactivity	Human
Clonality	Monoclonal
Isotype	IgG
Calculated MW	150 KDa

**Anti-CD5 Reference Antibody (Magenta patent anti-CD5) - Additional Information****Target/Specificity**  
CD5**Endotoxin**  
< 0.001EU/ µg,determined by LAL method.**Conjugation**  
Unconjugated**Expression system**  
CHO Cell**Format**  
Purified monoclonal antibody supplied in PBS, pH6.0, without preservative.This antibody is purified through a protein A column.**Anti-CD5 Reference Antibody (Magenta patent anti-CD5) - Protein Information****Name** CD5**Synonyms** LEU1**Function**  
Lymphoid-specific receptor expressed by all T-cells and in a subset of B-cells known as B1a cells. Plays a role in the regulation of TCR and BCR signaling, thymocyte selection, T-cell effector differentiation and immune tolerance. Acts by interacting with several ligands expressed on B-cells such as CD5L or CD72 and thereby plays an important role in contact-mediated, T-dependent B-cell activation and in the maintenance of regulatory T and B-cell homeostasis. Functions as a negative regulator of TCR signaling during thymocyte development by associating with several signaling proteins including LCK, CD3Z chain, PI3K or CBL (PubMed:<a href="http://www.uniprot.org/citations/1384049" target="\_blank">1384049</a>, PubMed:<a href="http://www.uniprot.org/citations/1385158" target="\_blank">1385158</a>). Mechanistically, co- engagement of CD3 with CD5 enhances phosphorylated CBL recruitment

leading to increased VAV1 phosphorylation and degradation (PubMed:<a href="http://www.uniprot.org/citations/23376399" target="\_blank">23376399</a>). Modulates B-cell biology through ERK1/2 activation in a Ca(2+)-dependent pathway via the non-selective Ca(2+) channel TRPC1, leading to IL-10 production (PubMed:<a href="http://www.uniprot.org/citations/27499044" target="\_blank">27499044</a>).

#### Cellular Location

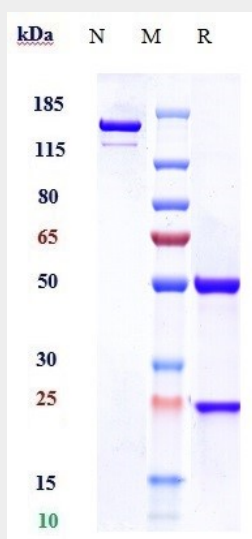
Cell membrane {ECO:0000250|UniProtKB:P13379}; Single-pass type I membrane protein {ECO:0000250|UniProtKB:P13379}

### Anti-CD5 Reference Antibody (Magenta patent anti-CD5) - Protocols

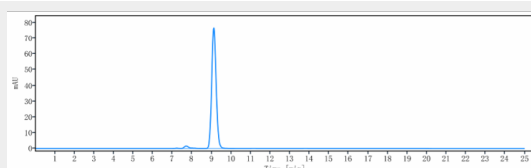
Provided below are standard protocols that you may find useful for product applications.

- [Western Blot](#)
- [Blocking Peptides](#)
- [Dot Blot](#)
- [Immunohistochemistry](#)
- [Immunofluorescence](#)
- [Immunoprecipitation](#)
- [Flow Cytometry](#)
- [Cell Culture](#)

### Anti-CD5 Reference Antibody (Magenta patent anti-CD5) - Images



Anti-CD5 Reference Antibody (Magenta patent anti-CD5) on SDS-PAGE under reducing (R) condition. The gel was stained with Coomassie Blue. The purity of the protein is greater than 90%



The purity of Anti-CD5 Reference Antibody (Magenta patent anti-CD5) is more than 95%, determined by SEC-HPLC.