

**Anti-CD52 Reference Antibody (alemtuzumab)
Recombinant Antibody
Catalog # APR10811****Specification**

Anti-CD52 Reference Antibody (alemtuzumab) - Product Information

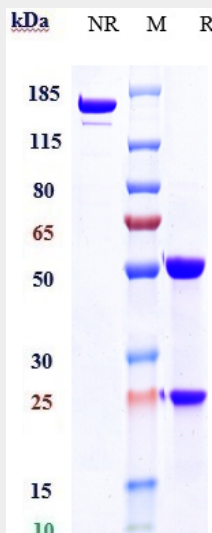
Application	FC, Kinetics, Animal Model
Primary Accession	P31358
Reactivity	Human
Clonality	Monoclonal
Isotype	IgG1
Calculated MW	146.06 KDa

Anti-CD52 Reference Antibody (alemtuzumab) - Additional Information**Target/Specificity**
CD52**Endotoxin**
< 0.001EU/ µg,determined by LAL method.**Conjugation**
Unconjugated**Expression system**
CHO Cell**Format**
Purified monoclonal antibody supplied in PBS, pH6.0, without preservative.This antibody is purified through a protein A column.**Anti-CD52 Reference Antibody (alemtuzumab) - Protein Information****Name** CD52**Synonyms** CDW52, HE5**Function**
May play a role in carrying and orienting carbohydrate, as well as having a more specific role.**Cellular Location**
Cell membrane; Lipid-anchor, GPI-anchor.**Anti-CD52 Reference Antibody (alemtuzumab) - Protocols**

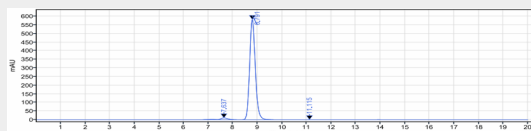
Provided below are standard protocols that you may find useful for product applications.

- [Western Blot](#)
- [Blocking Peptides](#)
- [Dot Blot](#)
- [Immunohistochemistry](#)
- [Immunofluorescence](#)
- [Immunoprecipitation](#)
- [Flow Cytometry](#)
- [Cell Culture](#)

Anti-CD52 Reference Antibody (alemtuzumab) - Images



Anti-CD52 Reference Antibody (alemtuzumab) on SDS-PAGE under reducing (R) condition. The gel was stained with Coomassie Blue. The purity of the protein is greater than 95%



The purity of Anti-CD52 Reference Antibody (alemtuzumab) is more than 96.85% ,determined by SEC-HPLC.