

**Anti-CD59 Reference Antibody ( Mellitus patent anti-CD59)  
Recombinant Antibody  
Catalog # APR10813****Specification****Anti-CD59 Reference Antibody ( Mellitus patent anti-CD59) - Product Information**

Application	<b>FC, Kinetics, Animal Model</b>
Primary Accession	<a href="#">P13987</a>
Reactivity	<b>Human</b>
Clonality	<b>Monoclonal</b>
Isotype	<b>IgG1</b>
Calculated MW	<b>150 KDa</b>

**Anti-CD59 Reference Antibody ( Mellitus patent anti-CD59) - Additional Information****Target/Specificity**  
CD59**Endotoxin**  
< 0.001EU/ µg,determined by LAL method.**Conjugation**  
Unconjugated**Expression system**  
CHO Cell**Format**  
Purified monoclonal antibody supplied in PBS, pH6.0, without preservative.This antibody is purified through a protein A column.**Anti-CD59 Reference Antibody ( Mellitus patent anti-CD59) - Protein Information****Name** CD59 {ECO:0000303|PubMed:2475570, ECO:0000312|HGNC:HGNC:1689}**Function**  
Potent inhibitor of the complement membrane attack complex (MAC) action, which protects human cells from damage during complement activation (PubMed:<a href="http://www.uniprot.org/citations/11882685" target="\_blank">11882685</a>, PubMed:<a href="http://www.uniprot.org/citations/1698710" target="\_blank">1698710</a>, PubMed:<a href="http://www.uniprot.org/citations/2475111" target="\_blank">2475111</a>, PubMed:<a href="http://www.uniprot.org/citations/2475570" target="\_blank">2475570</a>, PubMed:<a href="http://www.uniprot.org/citations/2606909" target="\_blank">2606909</a>, PubMed:<a href="http://www.uniprot.org/citations/9053451" target="\_blank">9053451</a>). Acts by binding to the beta-haipins of C8 (C8A and C8B) components of the assembling MAC, forming an intermolecular beta-sheet that prevents incorporation of the multiple copies of C9 required for complete formation of the osmolytic pore (PubMed:<a href="http://www.uniprot.org/citations/11882685" target="\_blank">11882685</a>, PubMed:<a href="http://www.uniprot.org/citations/11882685" target="\_blank">11882685</a>, PubMed:<a href="http://www.uniprot.org/citations/11882685" target="\_blank">11882685</a>).

[1698710](http://www.uniprot.org/citations/1698710), PubMed:<[36797260](http://www.uniprot.org/citations/36797260)>).

#### Cellular Location

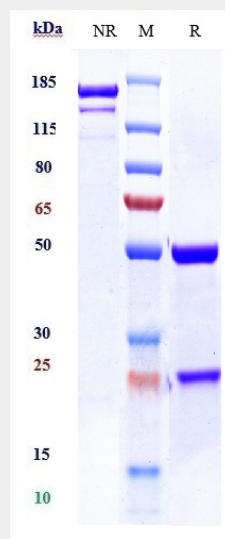
Cell membrane; Lipid-anchor, GPI-anchor. Secreted. Note=Localizes to the cell surface (PubMed:36797260). Soluble form found in a number of tissues (PubMed:8670172).

#### Anti-CD59 Reference Antibody ( Mellitus patent anti-CD59) - Protocols

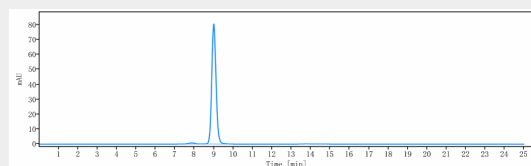
Provided below are standard protocols that you may find useful for product applications.

- [Western Blot](#)
- [Blocking Peptides](#)
- [Dot Blot](#)
- [Immunohistochemistry](#)
- [Immunofluorescence](#)
- [Immunoprecipitation](#)
- [Flow Cytometry](#)
- [Cell Culture](#)

#### Anti-CD59 Reference Antibody ( Mellitus patent anti-CD59) - Images



Anti-CD59 Reference Antibody ( Mellitus patent anti-CD59) on SDS-PAGE under reducing (R) condition. The gel was stained with Coomassie Blue. The purity of the protein is greater than 90%



The purity of Anti-CD59 Reference Antibody ( Mellitus patent anti-CD59) is more than 95%, determined by SEC-HPLC.