

**Anti-CHI3L1 Reference Antibody (Brown U. patent anti-CHI3L1)
Recombinant Antibody
Catalog # APR10830****Specification**

Anti-CHI3L1 Reference Antibody (Brown U. patent anti-CHI3L1) - Product Information

Application	FC, E, FTA
Primary Accession	P36222
Reactivity	Human
Clonality	Monoclonal
Isotype	IgG1
Calculated MW	150 KDa

Anti-CHI3L1 Reference Antibody (Brown U. patent anti-CHI3L1) - Additional Information**Target/Specificity**
CHI3L1**Endotoxin**

< 0.001EU/ µg,determined by LAL method.

Conjugation

Unconjugated

Expression system

CHO Cell

Format

Purified monoclonal antibody supplied in PBS, pH6.0, without preservative.This antibody is purified through a protein A column.

Storage

-80°C for 2 years under sterile conditions □ -20°C for 1 year under sterile conditions □ Avoid repeated freeze-thaw cycles.

Anti-CHI3L1 Reference Antibody (Brown U. patent anti-CHI3L1) - Protein Information**Name** CHI3L1**Function**

Carbohydrate-binding lectin with a preference for chitin. Has no chitinase activity. May play a role in tissue remodeling and in the capacity of cells to respond to and cope with changes in their environment. Plays a role in T-helper cell type 2 (Th2) inflammatory response and IL-13-induced inflammation, regulating allergen sensitization, inflammatory cell apoptosis, dendritic cell accumulation and M2 macrophage differentiation. Facilitates invasion of pathogenic enteric bacteria into colonic mucosa and lymphoid organs. Mediates activation of AKT1 signaling pathway and subsequent IL8 production in colonic epithelial cells. Regulates antibacterial responses in lung by contributing to macrophage bacterial killing, controlling bacterial dissemination and

augmenting host tolerance. Also regulates hyperoxia- induced injury, inflammation and epithelial apoptosis in lung.

Cellular Location

Secreted, extracellular space. Cytoplasm. Cytoplasm, perinuclear region. Endoplasmic reticulum

Tissue Location

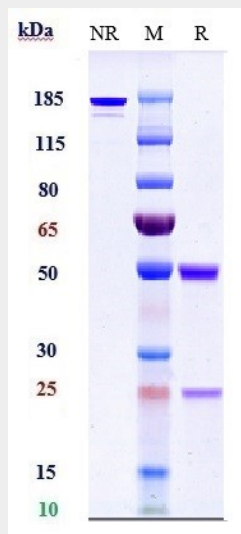
Present in activated macrophages, articular chondrocytes, synovial cells as well as in liver. Very low or undetectable expression in non-inflammatory colon. Undetectable in muscle tissues, lung, pancreas, mononuclear cells, or fibroblasts

Anti-CHI3L1 Reference Antibody (Brown U. patent anti-CHI3L1) - Protocols

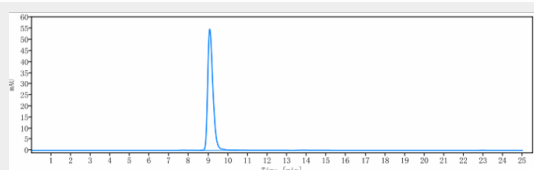
Provided below are standard protocols that you may find useful for product applications.

- [Western Blot](#)
- [Blocking Peptides](#)
- [Dot Blot](#)
- [Immunohistochemistry](#)
- [Immunofluorescence](#)
- [Immunoprecipitation](#)
- [Flow Cytometry](#)
- [Cell Culture](#)

Anti-CHI3L1 Reference Antibody (Brown U. patent anti-CHI3L1) - Images



Anti-CHI3L1 Reference Antibody (Brown U. patent anti-CHI3L1) on SDS-PAGE under reducing (R) condition. The gel was stained with Coomassie Blue. The purity of the protein is greater than 90%



The purity of Anti-CHI3L1 Reference Antibody (Brown U. patent anti-CHI3L1) is more than 95%, determined by SEC-HPLC.