

Anti-CLDN6 Reference Antibody (AE3-20)
Recombinant Antibody
Catalog # APR10833**Specification**

Anti-CLDN6 Reference Antibody (AE3-20) - Product Information

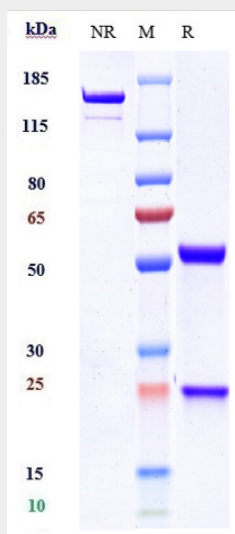
Application	FC, Kinetics, Animal Model
Primary Accession	P56747
Reactivity	Human
Clonality	Monoclonal
Isotype	IgG
Calculated MW	150 KDa

Anti-CLDN6 Reference Antibody (AE3-20) - Additional Information**Target/Specificity**
CLDN6**Endotoxin**
< 0.001EU/ µg,determined by LAL method.**Conjugation**
Unconjugated**Expression system**
CHO Cell**Format**
Purified monoclonal antibody supplied in PBS, pH6.0, without preservative.This antibody is purified through a protein A column.**Anti-CLDN6 Reference Antibody (AE3-20) - Protein Information****Name** CLDN6**Function**
Plays a major role in tight junction-specific obliteration of the intercellular space.**Cellular Location**
Cell junction, tight junction {ECO:0000250|UniProtKB:Q9Z262}. Cell membrane; Multi-pass membrane protein**Tissue Location**
Expressed in the liver, in peripheral blood mononuclear cells and hepatocarcinoma cell lines**Anti-CLDN6 Reference Antibody (AE3-20) - Protocols**

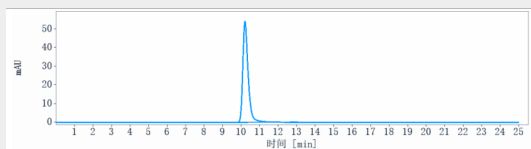
Provided below are standard protocols that you may find useful for product applications.

- [Western Blot](#)
- [Blocking Peptides](#)
- [Dot Blot](#)
- [Immunohistochemistry](#)
- [Immunofluorescence](#)
- [Immunoprecipitation](#)
- [Flow Cytometry](#)
- [Cell Culture](#)

Anti-CLDN6 Reference Antibody (AE3-20) - Images



Anti-CLDN6 Reference Antibody (AE3-20) on SDS-PAGE under reducing (R) condition. The gel was stained with Coomassie Blue. The purity of the protein is greater than 90%



The purity of Anti-CLDN6 Reference Antibody (AE3-20) is more than 95% ,determined by SEC-HPLC.