

**Anti-CLDN6 Reference Antibody (IM-301)**  
**Recombinant Antibody**  
**Catalog # APR10834****Specification**

---

**Anti-CLDN6 Reference Antibody (IM-301) - Product Information**

Application	FC, E, FTA
Primary Accession	<a href="#">P56747</a>
Reactivity	Cynomolgus, Human, Mouse
Clonality	Monoclonal
Isotype	IgG
Calculated MW	150 KDa

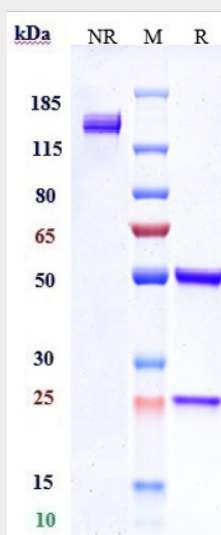
**Anti-CLDN6 Reference Antibody (IM-301) - Additional Information****Target/Specificity**  
CLDN6**Endotoxin**  
< 0.001EU/ µg,determined by LAL method.**Conjugation**  
Unconjugated**Expression system**  
CHO Cell**Format**  
Purified monoclonal antibody supplied in PBS, pH6.0, without preservative.This antibody is purified through a protein A column.**Storage**  
-80°C for 2 years under sterile conditions □ -20°C for 1 year under sterile conditions □ Avoid repeated freeze-thaw cycles.**Anti-CLDN6 Reference Antibody (IM-301) - Protein Information****Name** CLDN6**Function**  
Plays a major role in tight junction-specific obliteration of the intercellular space.**Cellular Location**  
Cell junction, tight junction {ECO:0000250|UniProtKB:Q9Z262}. Cell membrane; Multi-pass membrane protein**Tissue Location**  
Expressed in the liver, in peripheral blood mononuclear cells and hepatocarcinoma cell lines

## Anti-CLDN6 Reference Antibody (IM-301) - Protocols

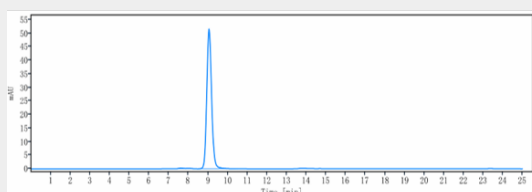
Provided below are standard protocols that you may find useful for product applications.

- [Western Blot](#)
- [Blocking Peptides](#)
- [Dot Blot](#)
- [Immunohistochemistry](#)
- [Immunofluorescence](#)
- [Immunoprecipitation](#)
- [Flow Cytometry](#)
- [Cell Culture](#)

## Anti-CLDN6 Reference Antibody (IM-301) - Images



Anti-CLDN6 Reference Antibody (IM-301) on SDS-PAGE under reducing (R) condition. The gel was stained with Coomassie Blue. The purity of the protein is greater than 90%



The purity of Anti-CLDN6 Reference Antibody (IM-301) is more than 95% ,determined by SEC-HPLC.