

Anti-Clusterin Reference Antibody (AB-16B5)
Recombinant Antibody
Catalog # APR10839**Specification**

Anti-Clusterin Reference Antibody (AB-16B5) - Product Information

| | |
|-------------------|----------------------------|
| Application | FC, Kinetics, Animal Model |
| Primary Accession | Q96AJ1 |
| Reactivity | Human |
| Clonality | Monoclonal |
| Isotype | IgG2SA |
| Calculated MW | 146.2 KDa |

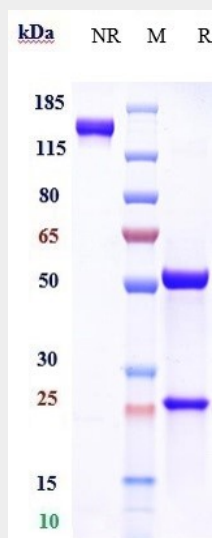
Anti-Clusterin Reference Antibody (AB-16B5) - Additional Information**Target/Specificity**
Clusterin**Endotoxin**
< 0.001EU/ µg,determined by LAL method.**Conjugation**
Unconjugated**Expression system**
CHO Cell**Format**
Purified monoclonal antibody supplied in PBS, pH6.0, without preservative.This antibody is purified through a protein A column.**Anti-Clusterin Reference Antibody (AB-16B5) - Protein Information****Name** CLUAP1**Synonyms** KIAA0643**Function**
Required for cilia biogenesis. Appears to function within the multiple intraflagellar transport complex B (IFT-B). Key regulator of hedgehog signaling.**Cellular Location**
Cell projection, cilium. Nucleus**Tissue Location**
Expressed in testis, thyroid and trachea and to a lower extent in spinal cord and adrenal gland. Highly expressed in colon cancer and osteosarcoma cell lines.

Anti-Clusterin Reference Antibody (AB-16B5) - Protocols

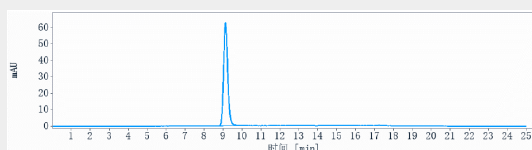
Provided below are standard protocols that you may find useful for product applications.

- [Western Blot](#)
- [Blocking Peptides](#)
- [Dot Blot](#)
- [Immunohistochemistry](#)
- [Immunofluorescence](#)
- [Immunoprecipitation](#)
- [Flow Cytometry](#)
- [Cell Culture](#)

Anti-Clusterin Reference Antibody (AB-16B5) - Images



Anti-Clusterin Reference Antibody (AB-16B5) on SDS-PAGE under reducing (R) condition. The gel was stained with Coomassie Blue. The purity of the protein is greater than 95%



The purity of Anti-Clusterin Reference Antibody (AB-16B5) is more than 95%, determined by SEC-HPLC.