

**Anti-CSF2 / GM-CSF Reference Antibody (Theraclone patent anti-GM-CSF)
Recombinant Antibody
Catalog # APR10856****Specification**

Anti-CSF2 / GM-CSF Reference Antibody (Theraclone patent anti-GM-CSF) - Product Information

Application	FC, E, FTA
Primary Accession	P04141
Reactivity	Cynomolgus, Human, Rabbit
Clonality	Monoclonal
Isotype	IgG1
Calculated MW	145.02 KDa

Anti-CSF2 / GM-CSF Reference Antibody (Theraclone patent anti-GM-CSF) - Additional Information**Target/Specificity**

CSF2 / GM-CSF

Endotoxin

< 0.001EU/ µg,determined by LAL method.

Conjugation

Unconjugated

Expression system

CHO Cell

Format

Purified monoclonal antibody supplied in PBS, pH6.0, without preservative.This antibody is purified through a protein A column.

Storage

-80°C for 2 years under sterile conditions □ -20°C for 1 year under sterile conditions □ Avoid repeated freeze-thaw cycles.

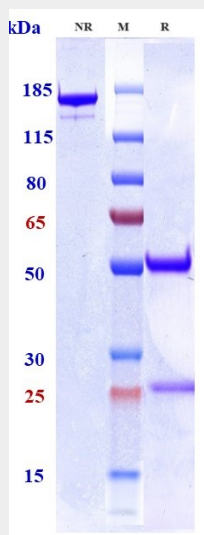
Anti-CSF2 / GM-CSF Reference Antibody (Theraclone patent anti-GM-CSF) - Protein Information**Name** CSF2**Synonyms** GMCSF**Function**

Cytokine that stimulates the growth and differentiation of hematopoietic precursor cells from various lineages, including granulocytes, macrophages, eosinophils and erythrocytes.

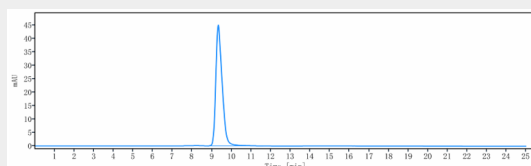
Cellular Location
Secreted**Anti-CSF2 / GM-CSF Reference Antibody (Theraclone patent anti-GM-CSF) - Protocols**

Provided below are standard protocols that you may find useful for product applications.

- [Western Blot](#)
- [Blocking Peptides](#)
- [Dot Blot](#)
- [Immunohistochemistry](#)
- [Immunofluorescence](#)
- [Immunoprecipitation](#)
- [Flow Cytometry](#)
- [Cell Culture](#)

Anti-CSF2 / GM-CSF Reference Antibody (Theraclone patent anti-GM-CSF) - Images

Anti-CSF2 / GM-CSF Reference Antibody (Theraclone patent anti-GM-CSF) on SDS-PAGE under reducing (R) condition. The gel was stained with Coomassie Blue. The purity of the protein is greater than 95%



The purity of Anti-CSF2 / GM-CSF Reference Antibody (Theraclone patent anti-GM-CSF) is more than 95%, determined by SEC-HPLC.