

Anti-CSF3 / G-CSF Reference Antibody (CSL324)
Recombinant Antibody
Catalog # APR10857**Specification**

Anti-CSF3 / G-CSF Reference Antibody (CSL324) - Product Information

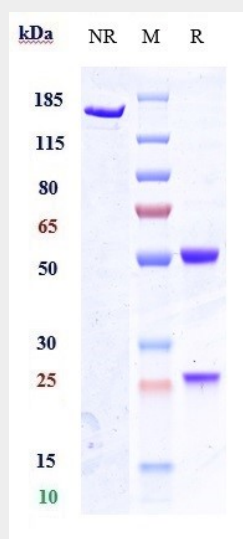
Application	FC, Kinetics, Animal Model
Primary Accession	P09919
Reactivity	Human
Clonality	Monoclonal
Isotype	IgG4SP
Calculated MW	143.86 KDa

Anti-CSF3 / G-CSF Reference Antibody (CSL324) - Additional Information**Target/Specificity**
CSF3 / G-CSF**Endotoxin**
< 0.001EU/ µg,determined by LAL method.**Conjugation**
Unconjugated**Expression system**
CHO Cell**Format**
Purified monoclonal antibody supplied in PBS, pH6.0, without preservative.This antibody is purified through a protein A column.**Anti-CSF3 / G-CSF Reference Antibody (CSL324) - Protein Information****Name** CSF3**Synonyms** C17orf33, GCSF**Function**
Granulocyte/macrophage colony-stimulating factors are cytokines that act in hematopoiesis by controlling the production, differentiation, and function of 2 related white cell populations of the blood, the granulocytes and the monocytes-macrophages. This CSF induces granulocytes.**Cellular Location**
Secreted.**Anti-CSF3 / G-CSF Reference Antibody (CSL324) - Protocols**

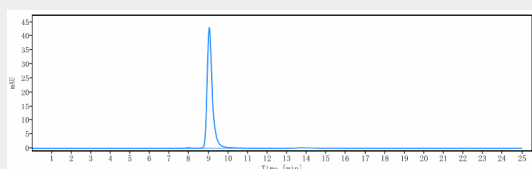
Provided below are standard protocols that you may find useful for product applications.

- [Western Blot](#)
- [Blocking Peptides](#)
- [Dot Blot](#)
- [Immunohistochemistry](#)
- [Immunofluorescence](#)
- [Immunoprecipitation](#)
- [Flow Cytometry](#)
- [Cell Culture](#)

Anti-CSF3 / G-CSF Reference Antibody (CSL324) - Images



Anti-CSF3 / G-CSF Reference Antibody (CSL324) on SDS-PAGE under reducing (R) condition. The gel was stained with Coomassie Blue. The purity of the protein is greater than 95%



The purity of Anti-CSF3 / G-CSF Reference Antibody (CSL324) is more than 99.09% ,determined by SEC-HPLC.