

**Anti-CSF3R / G-CSFR Reference Antibody (CSL patent anti-G-CSFR)  
Recombinant Antibody  
Catalog # APR10858****Specification**

---

**Anti-CSF3R / G-CSFR Reference Antibody (CSL patent anti-G-CSFR) - Product Information**

Application	FC, E, FTA
Primary Accession	<a href="#">Q99062</a>
Reactivity	Cynomolgus, Human, Mouse
Clonality	Monoclonal
Isotype	IgG4
Calculated MW	150 KDa

**Anti-CSF3R / G-CSFR Reference Antibody (CSL patent anti-G-CSFR) - Additional Information****Target/Specificity**  
CSF3R / G-CSFR**Endotoxin**  
< 0.001EU/ µg,determined by LAL method.**Conjugation**  
Unconjugated**Expression system**  
CHO Cell**Format**  
Purified monoclonal antibody supplied in PBS, pH6.0, without preservative.This antibody is purified through a protein A column.**Storage**  
-80°C for 2 years under sterile conditions □ -20°C for 1 year under sterile conditions □ Avoid repeated freeze-thaw cycles.**Anti-CSF3R / G-CSFR Reference Antibody (CSL patent anti-G-CSFR) - Protein Information****Name** CSF3R**Synonyms** GCSFR**Function**  
Receptor for granulocyte colony-stimulating factor (CSF3), essential for granulocytic maturation. Plays a crucial role in the proliferation, differentiation and survival of cells along the neutrophilic lineage. In addition it may function in some adhesion or recognition events at the cell surface.**Cellular Location**

[Isoform 2]: Secreted.

#### Tissue Location

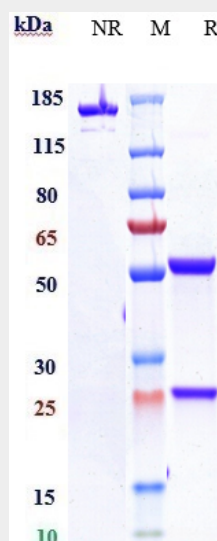
One or several isoforms have been found in myelogenous leukemia cell line KG-1, leukemia U-937 cell line, in bone marrow cells, placenta, and peripheral blood granulocytes. Isoform GCSFR-2 is found only in leukemia U-937 cells. Isoform GCSFR-3 is highly expressed in placenta

#### Anti-CSF3R / G-CSFR Reference Antibody (CSL patent anti-G-CSFR) - Protocols

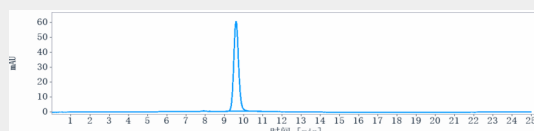
Provided below are standard protocols that you may find useful for product applications.

- [Western Blot](#)
- [Blocking Peptides](#)
- [Dot Blot](#)
- [Immunohistochemistry](#)
- [Immunofluorescence](#)
- [Immunoprecipitation](#)
- [Flow Cytometry](#)
- [Cell Culture](#)

#### Anti-CSF3R / G-CSFR Reference Antibody (CSL patent anti-G-CSFR) - Images



Anti-CSF3R / G-CSFR Reference Antibody (CSL patent anti-G-CSFR) on SDS-PAGE under reducing (R) condition. The gel was stained with Coomassie Blue. The purity of the protein is greater than 90%



The purity of Anti-CSF3R / G-CSFR Reference Antibody (CSL patent anti-G-CSFR) is more than 95%, determined by SEC-HPLC.