

**Anti-CTLA-4 / CD152 Reference Antibody (ipilimumab)  
Recombinant Antibody  
Catalog # APR10859****Specification**

---

**Anti-CTLA-4 / CD152 Reference Antibody (ipilimumab) - Product Information**

Application	FC, Kinetics, Animal Model
Primary Accession	<a href="#">P16410</a>
Reactivity	Human, Mouse
Clonality	Monoclonal
Isotype	IgG1
Calculated MW	145.38 KDa

**Anti-CTLA-4 / CD152 Reference Antibody (ipilimumab) - Additional Information****Target/Specificity**  
CTLA-4 / CD152**Endotoxin**  
< 0.001EU/ µg,determined by LAL method.**Conjugation**  
Unconjugated**Expression system**  
CHO Cell**Format**  
Purified monoclonal antibody supplied in PBS, pH6.0, without preservative.This antibody is purified through a protein A column.**Anti-CTLA-4 / CD152 Reference Antibody (ipilimumab) - Protein Information****Name** CTLA4**Synonyms** CD152**Function**  
Inhibitory receptor acting as a major negative regulator of T-cell responses. The affinity of CTLA4 for its natural B7 family ligands, CD80 and CD86, is considerably stronger than the affinity of their cognate stimulatory coreceptor CD28.**Cellular Location**  
Cell membrane; Single-pass type I membrane protein. Note=Exists primarily an intracellular antigen whose surface expression is tightly regulated by restricted trafficking to the cell surface and rapid internalization**Tissue Location**

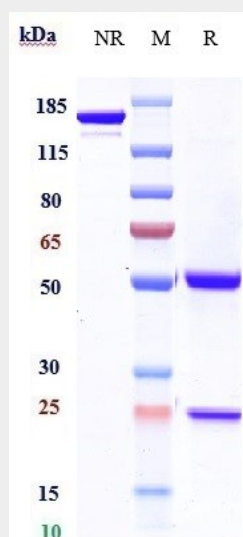
Widely expressed with highest levels in lymphoid tissues. Detected in activated T-cells where expression levels are 30- to 50-fold less than CD28, the stimulatory coreceptor, on the cell surface following activation.

### Anti-CTLA-4 / CD152 Reference Antibody (ipilimumab) - Protocols

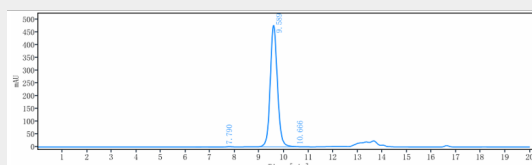
Provided below are standard protocols that you may find useful for product applications.

- [Western Blot](#)
- [Blocking Peptides](#)
- [Dot Blot](#)
- [Immunohistochemistry](#)
- [Immunofluorescence](#)
- [Immunoprecipitation](#)
- [Flow Cytometry](#)
- [Cell Culture](#)

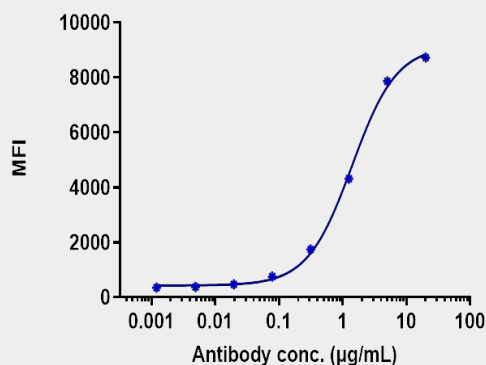
### Anti-CTLA-4 / CD152 Reference Antibody (ipilimumab) - Images



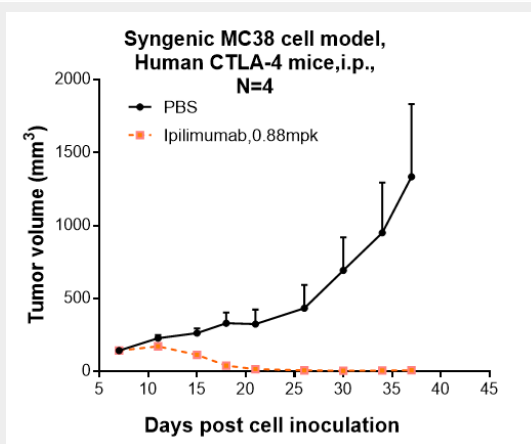
Anti-CTLA-4 / CD152 Reference Antibody (ipilimumab) on SDS-PAGE under reducing (R) condition. The gel was stained with Coomassie Blue. The purity of the protein is greater than 95%



The purity of Anti-CTLA-4 / CD152 Reference Antibody (ipilimumab) is more than 99.37%, determined by SEC-HPLC.



Human CTLA-4 & Human PD-1 CHO-K cells were stained with Anti-CTLA-4 / CD152 Reference Antibody (ipilimumab) and negative control protein respectively, washed and then followed by PE and analyzed with FACS, EC925=0.2270 µg/mL



Ipilimumab inhibited the tumor growth of MC38 on huCTLA-4 mice. The result showed significant anti-tumor effects, with an tumor inhibition rate (TGI) of 99.3% at 0.88 mpk at D37.