

Anti-CTLA-8 / IL-17a Antibody (SY18-VHH-11)
Recombinant Antibody
Catalog # APR10861**Specification**

Anti-CTLA-8 / IL-17a Antibody (SY18-VHH-11) - Product Information

Application	FC, Kinetics, Animal Model
Primary Accession	Q16552
Reactivity	Human
Clonality	Monoclonal
Isotype	IgG1
Calculated MW	150 KDa

Anti-CTLA-8 / IL-17a Antibody (SY18-VHH-11) - Additional Information**Target/Specificity**

CTLA-8 / IL-17a

Endotoxin

< 0.001EU/ µg,determined by LAL method.

Conjugation

Unconjugated

Expression system

CHO Cell

Format

Purified monoclonal antibody supplied in PBS, pH6.0, without preservative. This antibody is purified through a protein A column.

Anti-CTLA-8 / IL-17a Antibody (SY18-VHH-11) - Protein Information**Name** IL17A**Synonyms** CTLA8, IL17**Function**

Effector cytokine of innate and adaptive immune system involved in antimicrobial host defense and maintenance of tissue integrity (PubMed:24120361). Signals via IL17RA-IL17RC heterodimeric receptor complex, triggering homotypic interaction of IL17RA and IL17RC chains with TRAF3IP2 adapter. This leads to downstream TRAF6-mediated activation of NF-kappa-B and MAPkinase pathways ultimately resulting in transcriptional activation of cytokines, chemokines, antimicrobial peptides and matrix metalloproteinases, with potential strong immune inflammation (PubMed:17911633, PubMed:18684971, PubMed:19825828, PubMed:19825828, PubMed:19825828).

[21350122](http://www.uniprot.org/citations/21350122), PubMed: [24120361](http://www.uniprot.org/citations/24120361), PubMed: [8676080](http://www.uniprot.org/citations/8676080)). Plays an important role in connecting T cell-mediated adaptive immunity and acute inflammatory response to destroy extracellular bacteria and fungi. As a signature effector cytokine of T-helper 17 cells (Th17), primarily induces neutrophil activation and recruitment at infection and inflammatory sites (By similarity). In airway epithelium, mediates neutrophil chemotaxis via induction of CXCL1 and CXCL5 chemokines (By similarity). In secondary lymphoid organs, contributes to germinal center formation by regulating the chemotactic response of B cells to CXCL12 and CXCL13, enhancing retention of B cells within the germinal centers, B cell somatic hypermutation rate and selection toward plasma cells (By similarity). Effector cytokine of a subset of gamma-delta T cells that functions as part of an inflammatory circuit downstream IL1B, TLR2 and IL23A-IL12B to promote neutrophil recruitment for efficient bacterial clearance (By similarity). Effector cytokine of innate immune cells including invariant natural killer cell (iNKT) and group 3 innate lymphoid cells that mediate initial neutrophilic inflammation (By similarity). Involved in the maintenance of the integrity of epithelial barriers during homeostasis and pathogen infection (PubMed: [21350122](http://www.uniprot.org/citations/21350122)). Upon acute injury, has a direct role in epithelial barrier formation by regulating OCLN localization and tight junction biogenesis (By similarity). As part of the mucosal immune response induced by commensal bacteria, enhances host's ability to resist pathogenic bacterial and fungal infections by promoting neutrophil recruitment and antimicrobial peptides release (By similarity). In synergy with IL17F, mediates the production of antimicrobial beta-defensins DEFB1, DEFB103A, and DEFB104A by mucosal epithelial cells, limiting the entry of microbes through the epithelial barriers (By similarity). Involved in antiviral host defense through various mechanisms (By similarity). Enhances immunity against West Nile virus by promoting T cell cytotoxicity (By similarity). May play a beneficial role in influenza A virus (H5N1) infection by enhancing B cell recruitment and immune response in the lung (By similarity). Contributes to influenza A virus (H1N1) clearance by driving the differentiation of B-1a B cells, providing for production of virus-specific IgM antibodies at first line of host defense (By similarity).

Cellular Location

Secreted

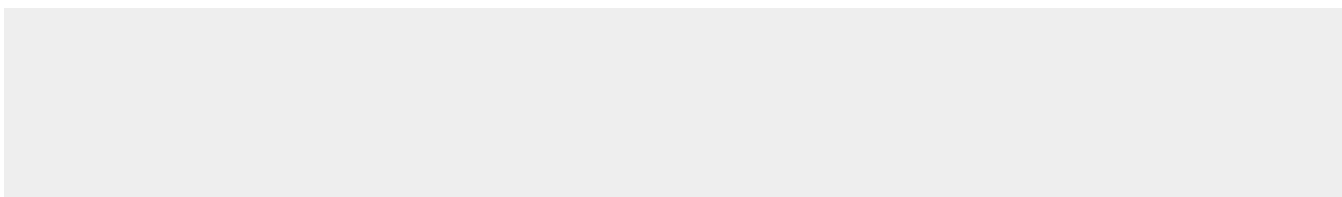
Tissue Location

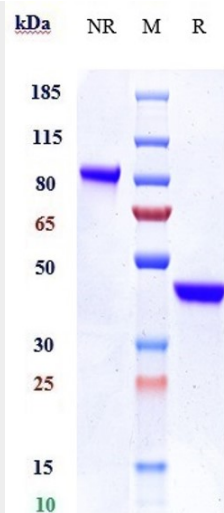
Expressed in memory Th17 cells (at protein level).

Anti-CTLA-8 / IL-17a Antibody (SY18-VHH-11) - Protocols

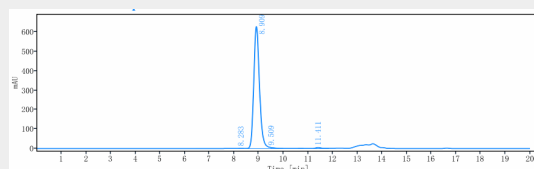
Provided below are standard protocols that you may find useful for product applications.

- [Western Blot](#)
- [Blocking Peptides](#)
- [Dot Blot](#)
- [Immunohistochemistry](#)
- [Immunofluorescence](#)
- [Immunoprecipitation](#)
- [Flow Cytometry](#)
- [Cell Culture](#)

Anti-CTLA-8 / IL-17a Antibody (SY18-VHH-11) - Images



Anti-CTLA-8 / IL-17a Antibody (SY18-VHH-11) on SDS-PAGE under reducing (R) condition. The gel was stained with Coomassie Blue. The purity of the protein is greater than 90%



The purity of Anti-CTLA-8 / IL-17a Antibody (SY18-VHH-11) is more than 95% ,determined by SEC-HPLC.