

**Anti-CXADR Reference Antibody (Med. Bio. Labs patent anti-CXADR)
Recombinant Antibody
Catalog # APR10869****Specification**

Anti-CXADR Reference Antibody (Med. Bio. Labs patent anti-CXADR) - Product Information

Application	FC, E, FTA
Primary Accession	P78310
Reactivity	Human
Clonality	Monoclonal
Isotype	IgG2SA
Calculated MW	150 KDa

Anti-CXADR Reference Antibody (Med. Bio. Labs patent anti-CXADR) - Additional Information**Target/Specificity**
CXADR**Endotoxin**
< 0.001EU/ µg,determined by LAL method.**Conjugation**
Unconjugated**Expression system**
CHO Cell**Format**
Purified monoclonal antibody supplied in PBS, pH6.0, without preservative.This antibody is purified through a protein A column.**Storage**
-80°C for 2 years under sterile conditions □ -20°C for 1 year under sterile conditions □ Avoid repeated freeze-thaw cycles.**Anti-CXADR Reference Antibody (Med. Bio. Labs patent anti-CXADR) - Protein Information****Name** CXADR**Synonyms** CAR**Function**
Component of the epithelial apical junction complex that may function as a homophilic cell adhesion molecule and is essential for tight junction integrity. Also involved in transepithelial migration of leukocytes through adhesive interactions with JAML a transmembrane protein of the

plasma membrane of leukocytes. The interaction between both receptors also mediates the activation of gamma-delta T-cells, a subpopulation of T-cells residing in epithelia and involved in tissue homeostasis and repair. Upon epithelial CXADR-binding, JAML induces downstream cell signaling events in gamma-delta T-cells through PI3- kinase and MAP kinases. It results in proliferation and production of cytokines and growth factors by T-cells that in turn stimulate epithelial tissues repair.

Cellular Location

[Isoform 1]: Cell membrane; Single-pass type I membrane protein. Basolateral cell membrane; Single-pass type I membrane protein. Cell junction, tight junction. Cell junction, adherens junction. Note=In epithelial cells localizes to the apical junction complex composed of tight and adherens junctions (PubMed:12297051). In airway epithelial cells localized to basolateral membrane but not to apical surface (PubMed:11316797). [Isoform 4]: Secreted

Tissue Location

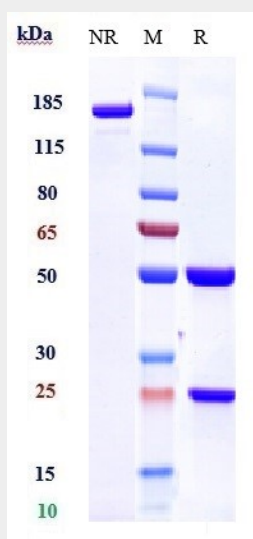
Expressed in pancreas, brain, heart, small intestine, testis, prostate and at a lower level in liver and lung Isoform 5 is ubiquitously expressed. Isoform 3 is expressed in heart, lung and pancreas. In skeletal muscle, isoform 1 is found at the neuromuscular junction and isoform 2 is found in blood vessels. In cardiac muscle, isoform 1 and isoform 2 are found at intercalated disks. In heart expressed in subendothelial layers of the vessel wall but not in the luminal endothelial surface. Expression is elevated in hearts with dilated cardiomyopathy.

Anti-CXADR Reference Antibody (Med. Bio. Labs patent anti-CXADR) - Protocols

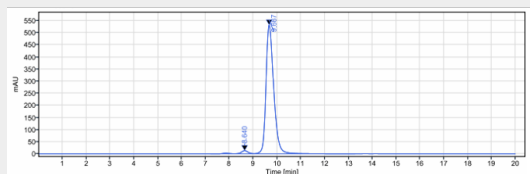
Provided below are standard protocols that you may find useful for product applications.

- [Western Blot](#)
- [Blocking Peptides](#)
- [Dot Blot](#)
- [Immunohistochemistry](#)
- [Immunofluorescence](#)
- [Immunoprecipitation](#)
- [Flow Cytometry](#)
- [Cell Culture](#)

Anti-CXADR Reference Antibody (Med. Bio. Labs patent anti-CXADR) - Images



Anti-CXADR Reference Antibody (Med. Bio. Labs patent anti-CXADR) on SDS-PAGE under reducing (R) condition. The gel was stained with Coomassie Blue. The purity of the protein is greater than 90%



The purity of Anti-CXADR Reference Antibody (Med. Bio. Labs patent anti-CXADR) is more than 95% ,determined by SEC-HPLC.