

**Anti-CYR61 / CCN1 Reference Antibody (Roche patent anti-CCN1)  
Recombinant Antibody  
Catalog # APR10877****Specification**

---

**Anti-CYR61 / CCN1 Reference Antibody (Roche patent anti-CCN1) - Product Information**

Application	FC, E, FTA
Primary Accession	<a href="#">O00622</a>
Reactivity	Human
Clonality	Monoclonal
Isotype	IgG1
Calculated MW	150 KDa

**Anti-CYR61 / CCN1 Reference Antibody (Roche patent anti-CCN1) - Additional Information****Target/Specificity**  
CYR61 / CCN1**Endotoxin**  
< 0.001EU/ µg,determined by LAL method.**Conjugation**  
Unconjugated**Expression system**  
CHO Cell**Format**  
Purified monoclonal antibody supplied in PBS, pH6.0, without preservative.This antibody is purified through a protein A column.**Storage**  
-80°C for 2 years under sterile conditions □ -20°C for 1 year under sterile conditions □ Avoid repeated freeze-thaw cycles.**Anti-CYR61 / CCN1 Reference Antibody (Roche patent anti-CCN1) - Protein Information****Name** CCN1 ([HGNC:2654](#))**Function**  
Promotes cell proliferation, chemotaxis, angiogenesis and cell adhesion. Appears to play a role in wound healing by up- regulating, in skin fibroblasts, the expression of a number of genes involved in angiogenesis, inflammation and matrix remodeling including VEGF-A, VEGF-C, MMP1, MMP3, TIMP1, uPA, PAI-1 and integrins alpha-3 and alpha-5. CCN1-mediated gene regulation is dependent on heparin-binding. Down-regulates the expression of alpha-1 and alpha-2 subunits of collagen type-1. Promotes cell adhesion and adhesive signaling through integrin alpha-6/beta-1, cell migration through integrin alpha-v/beta-5 and cell proliferation through integrin alpha-v/beta-3.

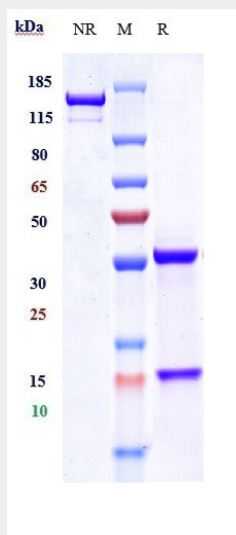
**Cellular Location**  
Secreted.

### **Anti-CYR61 / CCN1 Reference Antibody (Roche patent anti-CCN1) - Protocols**

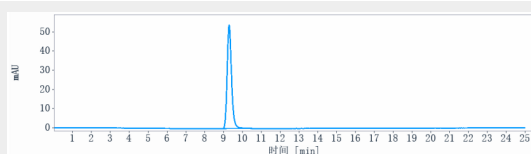
Provided below are standard protocols that you may find useful for product applications.

- [Western Blot](#)
- [Blocking Peptides](#)
- [Dot Blot](#)
- [Immunohistochemistry](#)
- [Immunofluorescence](#)
- [Immunoprecipitation](#)
- [Flow Cytometry](#)
- [Cell Culture](#)

### **Anti-CYR61 / CCN1 Reference Antibody (Roche patent anti-CCN1) - Images**



Anti-CYR61 / CCN1 Reference Antibody (Roche patent anti-CCN1) on SDS-PAGE under reducing (R) condition. The gel was stained with Coomassie Blue. The purity of the protein is greater than 90%



The purity of Anti-CYR61 / CCN1 Reference Antibody (Roche patent anti-CCN1) is more than 95%, determined by SEC-HPLC.