

**Anti-DC-SIGN / CD209 Reference Antibody (INSERM patent anti-DC-SIGN)
Recombinant Antibody
Catalog # APR10878****Specification**

Anti-DC-SIGN / CD209 Reference Antibody (INSERM patent anti-DC-SIGN) - Product Information

Application	FC, E, FTA
Primary Accession	O9NNX6
Reactivity	Human
Clonality	Monoclonal
Isotype	IgG1
Calculated MW	150 KDa

Anti-DC-SIGN / CD209 Reference Antibody (INSERM patent anti-DC-SIGN) - Additional Information**Target/Specificity**
DC-SIGN / CD209**Endotoxin**
< 0.001EU/ µg,determined by LAL method.**Conjugation**
Unconjugated**Expression system**
CHO Cell**Format**
Purified monoclonal antibody supplied in PBS, pH6.0, without preservative.This antibody is purified through a protein A column.**Storage**
-80°C for 2 years under sterile conditions □ -20°C for 1 year under sterile conditions □ Avoid repeated freeze-thaw cycles.**Anti-DC-SIGN / CD209 Reference Antibody (INSERM patent anti-DC-SIGN) - Protein Information****Name** CD209**Synonyms** CLEC4L**Function**
Pathogen-recognition receptor expressed on the surface of immature dendritic cells (DCs) and involved in initiation of primary immune response. Thought to mediate the endocytosis of pathogens which are subsequently degraded in lysosomal compartments. The receptor returns to

the cell membrane surface and the pathogen-derived antigens are presented to resting T-cells via MHC class II proteins to initiate the adaptive immune response.

Cellular Location

[Isoform 1]: Cell membrane; Single- pass type II membrane protein [Isoform 3]: Cell membrane; Single- pass type II membrane protein [Isoform 5]: Cell membrane; Single- pass type II membrane protein [Isoform 7]: Secreted. [Isoform 9]: Secreted. [Isoform 11]: Secreted.

Tissue Location

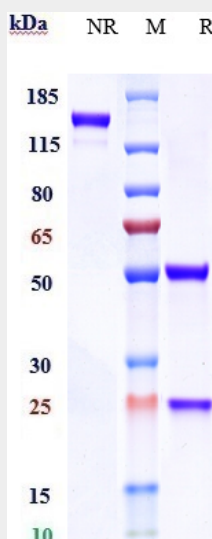
Predominantly expressed in dendritic cells and in DC-residing tissues. Also found in placental macrophages, endothelial cells of placental vascular channels, peripheral blood mononuclear cells, and THP-1 monocytes.

Anti-DC-SIGN / CD209 Reference Antibody (INSERM patent anti-DC-SIGN) - Protocols

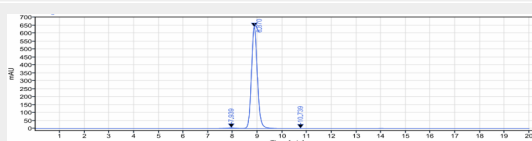
Provided below are standard protocols that you may find useful for product applications.

- [Western Blot](#)
- [Blocking Peptides](#)
- [Dot Blot](#)
- [Immunohistochemistry](#)
- [Immunofluorescence](#)
- [Immunoprecipitation](#)
- [Flow Cytometry](#)
- [Cell Culture](#)

Anti-DC-SIGN / CD209 Reference Antibody (INSERM patent anti-DC-SIGN) - Images



Anti-DC-SIGN / CD209 Reference Antibody (INSERM patent anti-DC-SIGN) on SDS-PAGE under reducing (R) condition. The gel was stained with Coomassie Blue. The purity of the protein is greater than 90%



The purity of Anti-DC-SIGN / CD209 Reference Antibody (INSERM patent anti-DC-SIGN) is more than 95% ,determined by SEC-HPLC.