

**Anti-DLL4 Reference Antibody (Smart Targeting patent anti-DLL4)
Recombinant Antibody
Catalog # APR10883****Specification**

Anti-DLL4 Reference Antibody (Smart Targeting patent anti-DLL4) - Product Information

| | |
|-------------------|----------------------------|
| Application | FC, Kinetics, Animal Model |
| Primary Accession | Q9NR61 |
| Reactivity | Human |
| Clonality | Monoclonal |
| Isotype | IgG1 |
| Calculated MW | 145 KDa |

Anti-DLL4 Reference Antibody (Smart Targeting patent anti-DLL4) - Additional Information**Target/Specificity**

DLL4

Endotoxin

< 0.001EU/ µg,determined by LAL method.

Conjugation

Unconjugated

Expression system

CHO Cell

Format

Purified monoclonal antibody supplied in PBS, pH6.0, without preservative.This antibody is purified through a protein A column.

Anti-DLL4 Reference Antibody (Smart Targeting patent anti-DLL4) - Protein Information**Name** DLL4**Function**

Involved in the Notch signaling pathway as Notch ligand (PubMed:11134954). Activates NOTCH1 and NOTCH4. Involved in angiogenesis; negatively regulates endothelial cell proliferation and migration and angiogenic sprouting (PubMed:20616313). Essential for retinal progenitor proliferation. Required for suppressing rod fates in late retinal progenitors as well as for proper generation of other retinal cell types (By similarity). During spinal cord neurogenesis, inhibits V2a interneuron fate (PubMed:17728344).

Cellular Location

Cell membrane; Single-pass type I membrane protein

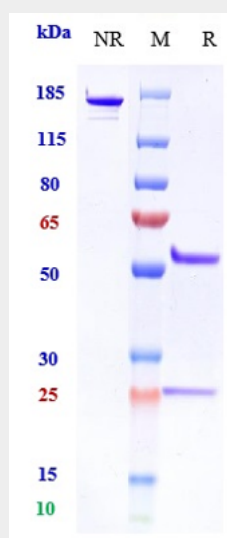
Tissue Location

Expressed in vascular endothelium.

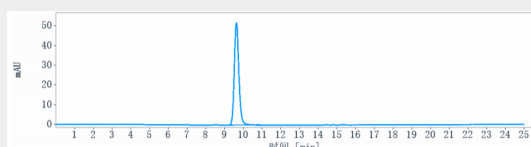
Anti-DLL4 Reference Antibody (Smart Targeting patent anti-DLL4) - Protocols

Provided below are standard protocols that you may find useful for product applications.

- [Western Blot](#)
- [Blocking Peptides](#)
- [Dot Blot](#)
- [Immunohistochemistry](#)
- [Immunofluorescence](#)
- [Immunoprecipitation](#)
- [Flow Cytometry](#)
- [Cell Culture](#)

Anti-DLL4 Reference Antibody (Smart Targeting patent anti-DLL4) - Images

Anti-DLL4 Reference Antibody (Smart Targeting patent anti-DLL4) on SDS-PAGE under reducing (R) condition. The gel was stained with Coomassie Blue. The purity of the protein is greater than 90%



The purity of Anti-DLL4 Reference Antibody (Smart Targeting patent anti-DLL4) is more than 95%, determined by SEC-HPLC.