

**Anti-Dysadherin Reference Antibody (Centrose patent anti-dysadherin)
Recombinant Antibody
Catalog # APR10886****Specification**

Anti-Dysadherin Reference Antibody (Centrose patent anti-dysadherin) - Product Information

Application	FC, Kinetics, Animal Model
Primary Accession	Q96DB9
Reactivity	Human, Mouse
Clonality	Monoclonal
Isotype	IgG1
Calculated MW	150 KDa

Anti-Dysadherin Reference Antibody (Centrose patent anti-dysadherin) - Additional Information**Target/Specificity**

Dysadherin

Endotoxin

< 0.001EU/ µg,determined by LAL method.

Conjugation

Unconjugated

Expression system

CHO Cell

Format

Purified monoclonal antibody supplied in PBS, pH6.0, without preservative.This antibody is purified through a protein A column.

Anti-Dysadherin Reference Antibody (Centrose patent anti-dysadherin) - Protein Information**Name** FXYD5**Synonyms** DYSAD, IWU1**Function**

Associates with and regulates the activity of the sodium/potassium-transporting ATPase (NKA) which catalyzes the hydrolysis of ATP coupled with the exchange of Na(+) and K(+) ions across the plasma membrane (By similarity). May increase NKA activity by increasing the apparent affinity for Na(+) (PubMed:18263667). Involved in down-regulation of E-cadherin which results in reduced cell adhesion. Promotes metastasis (PubMed:11756660).

Cellular Location

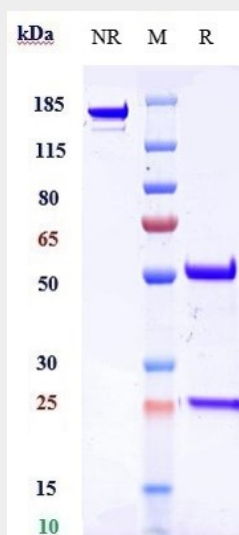
Cell membrane; Single-pass type I membrane protein {ECO:0000250|UniProtKB:P97808}
Basolateral cell membrane {ECO:0000250|UniProtKB:P97808}; Single-pass type I membrane protein {ECO:0000250|UniProtKB:P97808}. Note=In kidneys localizes to the basolateral membrane of the connecting tubule {ECO:0000250|UniProtKB:P97808}

Anti-Dysadherin Reference Antibody (Centrose patent anti-dysadherin) - Protocols

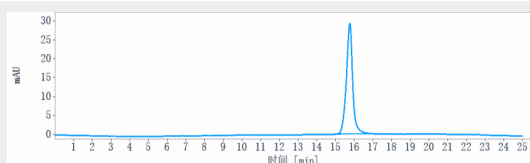
Provided below are standard protocols that you may find useful for product applications.

- [Western Blot](#)
- [Blocking Peptides](#)
- [Dot Blot](#)
- [Immunohistochemistry](#)
- [Immunofluorescence](#)
- [Immunoprecipitation](#)
- [Flow Cytometry](#)
- [Cell Culture](#)

Anti-Dysadherin Reference Antibody (Centrose patent anti-dysadherin) - Images



Anti-Dysadherin Reference Antibody (Centrose patent anti-dysadherin) on SDS-PAGE under reducing (R) condition. The gel was stained with Coomassie Blue. The purity of the protein is greater than 90%



The purity of Anti-Dysadherin Reference Antibody (Centrose patent anti-dysadherin) is more than 95% ,determined by SEC-HPLC.