

**Anti-ERG Reference Antibody (Jackson Foundation patent anti-ERG)  
Recombinant Antibody  
Catalog # APR10903****Specification**

---

**Anti-ERG Reference Antibody (Jackson Foundation patent anti-ERG) - Product Information**

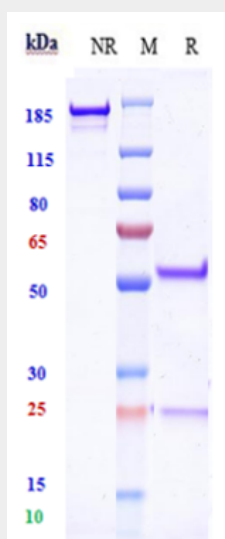
Application	FC, Kinetics, Animal Model
Primary Accession	<a href="#">P11308</a>
Reactivity	Human, Mouse
Clonality	Monoclonal
Isotype	IgG1
Calculated MW	150 KDa

**Anti-ERG Reference Antibody (Jackson Foundation patent anti-ERG) - Additional Information****Target/Specificity**  
ERG**Endotoxin**  
< 0.001EU/ µg,determined by LAL method.**Conjugation**  
Unconjugated**Expression system**  
CHO Cell**Format**  
Purified monoclonal antibody supplied in PBS, pH6.0, without preservative.This antibody is purified through a protein A column.**Anti-ERG Reference Antibody (Jackson Foundation patent anti-ERG) - Protein Information****Name** ERG**Function**  
Transcriptional regulator. May participate in transcriptional regulation through the recruitment of SETDB1 histone methyltransferase and subsequent modification of local chromatin structure.**Cellular Location**  
Nucleus {ECO:0000255|PROSITE-ProRule:PRU00237, ECO:0000269|PubMed:17289661}.  
Cytoplasm Note=Localized in cytoplasmic mRNP granules containing untranslated mRNAs**Anti-ERG Reference Antibody (Jackson Foundation patent anti-ERG) - Protocols**

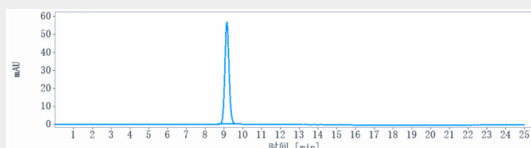
Provided below are standard protocols that you may find useful for product applications.

- [Western Blot](#)
- [Blocking Peptides](#)
- [Dot Blot](#)
- [Immunohistochemistry](#)
- [Immunofluorescence](#)
- [Immunoprecipitation](#)
- [Flow Cytometry](#)
- [Cell Culture](#)

#### Anti-ERG Reference Antibody (Jackson Foundation patent anti-ERG) - Images



Anti-ERG Reference Antibody (Jackson Foundation patent anti-ERG) on SDS-PAGE under reducing (R) condition. The gel was stained with Coomassie Blue. The purity of the protein is greater than 95%



The purity of Anti-ERG Reference Antibody (Jackson Foundation patent anti-ERG) is more than 95%, determined by SEC-HPLC.