

**Anti-GOLM1 Reference Antibody (Cureab patent anti-GP73)  
Recombinant Antibody  
Catalog # APR10920****Specification**

---

**Anti-GOLM1 Reference Antibody (Cureab patent anti-GP73) - Product Information**

Application	FC, E, FTA
Primary Accession	<a href="#">Q8NBJ4</a>
Reactivity	Cynomolgus, Human, Mouse
Clonality	Monoclonal
Isotype	IgG1
Calculated MW	150 KDa

**Anti-GOLM1 Reference Antibody (Cureab patent anti-GP73) - Additional Information****Target/Specificity**  
GOLM1**Endotoxin**  
< 0.001EU/ µg,determined by LAL method.**Conjugation**  
Unconjugated**Expression system**  
CHO Cell**Format**  
Purified monoclonal antibody supplied in PBS, pH6.0, without preservative.This antibody is purified through a protein A column.**Storage**  
-80°C for 2 years under sterile conditions □ -20°C for 1 year under sterile conditions □ Avoid repeated freeze-thaw cycles.**Anti-GOLM1 Reference Antibody (Cureab patent anti-GP73) - Protein Information****Name** GOLM1**Synonyms** C9orf155, GOLPH2**Function**  
Unknown. Cellular response protein to viral infection.**Cellular Location**  
Golgi apparatus, cis-Golgi network membrane; Single-pass type II membrane protein. Note=Early Golgi. Cycles via the cell surface and endosomes upon luminal pH disruption

### Tissue Location

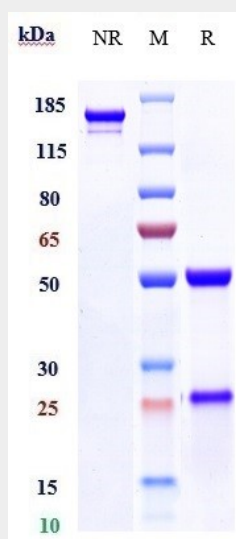
Widely expressed. Highly expressed in colon, prostate, trachea and stomach. Expressed at lower level in testis, muscle, lymphoid tissues, white blood cells and spleen. Predominantly expressed by cells of the epithelial lineage. Expressed at low level in normal liver. Expression significantly increases in virus (HBV, HCV) infected liver. Expression does not increase in liver disease due to non-viral causes (alcohol-induced liver disease, autoimmune hepatitis) Increased expression in hepatocytes appears to be a general feature of advanced liver disease. In liver tissue from patients with adult giant- cell hepatitis (GCH), it is strongly expressed in hepatocytes-derived syncytial giant cells. Constitutively expressed by biliary epithelial cells but not by hepatocytes.

### Anti-GOLM1 Reference Antibody (Cureab patent anti-GP73) - Protocols

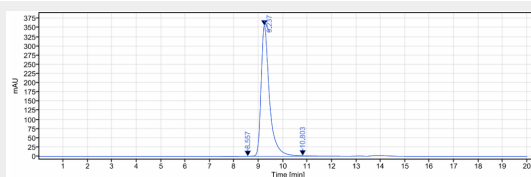
Provided below are standard protocols that you may find useful for product applications.

- [Western Blot](#)
- [Blocking Peptides](#)
- [Dot Blot](#)
- [Immunohistochemistry](#)
- [Immunofluorescence](#)
- [Immunoprecipitation](#)
- [Flow Cytometry](#)
- [Cell Culture](#)

### Anti-GOLM1 Reference Antibody (Cureab patent anti-GP73) - Images



Anti-GOLM1 Reference Antibody (Cureab patent anti-GP73) on SDS-PAGE under reducing (R) condition. The gel was stained with Coomassie Blue. The purity of the protein is greater than 90%



The purity of Anti-GOLM1 Reference Antibody (Cureab patent anti-GP73) is more than 95%, determined by SEC-HPLC.