

**Anti-GPC2 / Glypican 2 Reference Antibody (Nih Patent Anti-Glypican-2)
Recombinant Antibody
Catalog # APR10922****Specification**

Anti-GPC2 / Glypican 2 Reference Antibody (Nih Patent Anti-Glypican-2) - Product Information

Application	FC, E, FTA
Primary Accession	Q8N158
Reactivity	Human, Mouse
Clonality	Monoclonal
Isotype	IgG1
Calculated MW	150 KDa

Anti-GPC2 / Glypican 2 Reference Antibody (Nih Patent Anti-Glypican-2) - Additional Information**Target/Specificity**

GPC2 / Glypican 2

Endotoxin

< 0.001EU/ µg,determined by LAL method.

Conjugation

Unconjugated

Expression system

CHO Cell

Format

Purified monoclonal antibody supplied in PBS, pH6.0, without preservative.This antibody is purified through a protein A column.

Anti-GPC2 / Glypican 2 Reference Antibody (Nih Patent Anti-Glypican-2) - Protein Information**Name** GPC2**Function**

Cell surface proteoglycan that bears heparan sulfate. May fulfill a function related to the motile behaviors of developing neurons (By similarity).

Cellular Location

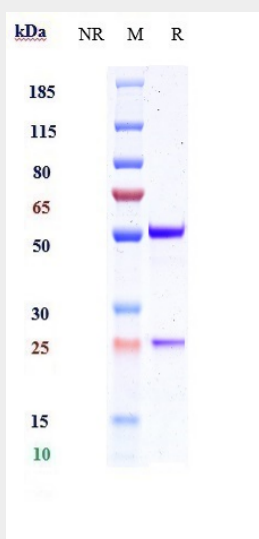
Cell membrane; Lipid-anchor, GPI- anchor; Extracellular side

Anti-GPC2 / Glypican 2 Reference Antibody (Nih Patent Anti-Glypican-2) - Protocols

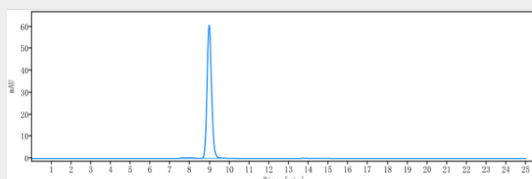
Provided below are standard protocols that you may find useful for product applications.

- [Western Blot](#)
- [Blocking Peptides](#)
- [Dot Blot](#)
- [Immunohistochemistry](#)
- [Immunofluorescence](#)
- [Immunoprecipitation](#)
- [Flow Cytometry](#)
- [Cell Culture](#)

Anti-GPC2 / Glypican 2 Reference Antibody (Nih Patent Anti-Glypican-2) - Images



Anti-GPC2 / Glypican 2 Reference Antibody (Nih Patent Anti-Glypican-2) on SDS-PAGE under reducing (R) condition. The gel was stained with Coomassie Blue. The purity of the protein is greater than 90%



The purity of Anti-GPC2 / Glypican 2 Reference Antibody (Nih Patent Anti-Glypican-2) is more than 95% ,determined by SEC-HPLC.