

**Anti-GPR73 / PROKR1 Reference Antibody (Multiple seq-one in animal)**  
**Recombinant Antibody**  
**Catalog # APR10925****Specification**

---

**Anti-GPR73 / PROKR1 Reference Antibody (Multiple seq-one in animal) - Product Information**

|                   |                            |
|-------------------|----------------------------|
| Application       | FC, Kinetics, Animal Model |
| Primary Accession | <a href="#">Q8TCW9</a>     |
| Reactivity        | Human                      |
| Clonality         | Monoclonal                 |
| Isotype           | IgG1                       |
| Calculated MW     | 150 KDa                    |

**Anti-GPR73 / PROKR1 Reference Antibody (Multiple seq-one in animal) - Additional Information****Target/Specificity**  
GPR73 / PROKR1**Endotoxin**  
< 0.001EU/ µg,determined by LAL method.**Conjugation**  
Unconjugated**Expression system**  
CHO Cell**Format**  
Purified monoclonal antibody supplied in PBS, pH6.0, without preservative.This antibody is purified through a protein A column.**Anti-GPR73 / PROKR1 Reference Antibody (Multiple seq-one in animal) - Protein Information****Name** PROKR1**Synonyms** GPR73, PKR1**Function**  
Receptor for prokineticin 1. Exclusively coupled to the G(q) subclass of heteromeric G proteins. Activation leads to mobilization of calcium, stimulation of phosphoinositide turnover and activation of p44/p42 mitogen-activated protein kinase. May play a role during early pregnancy.**Cellular Location**  
Cell membrane; Multi-pass membrane protein.

### Tissue Location

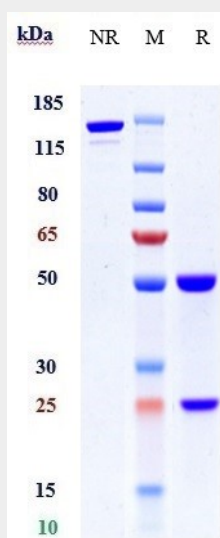
Localizes to glandular epithelium, stroma and vascular endothelial cells of first trimester decidua (at protein level). Up-regulated in first trimester decidua when compared with non- pregnant endometrium. Expressed in the stomach, throughout the small intestine, colon, rectum, thyroid gland, pituitary gland, salivary gland, adrenal gland, testis, ovary, brain, spleen, prostate and pancreas.

### Anti-GPR73 / PROKR1 Reference Antibody (Multiple seq-one in animal) - Protocols

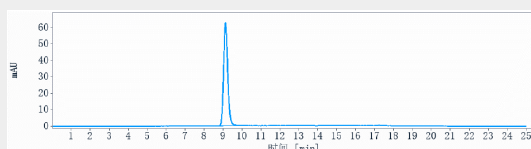
Provided below are standard protocols that you may find useful for product applications.

- [Western Blot](#)
- [Blocking Peptides](#)
- [Dot Blot](#)
- [Immunohistochemistry](#)
- [Immunofluorescence](#)
- [Immunoprecipitation](#)
- [Flow Cytometry](#)
- [Cell Culture](#)

### Anti-GPR73 / PROKR1 Reference Antibody (Multiple seq-one in animal) - Images



Anti-GPR73 / PROKR1 Reference Antibody (Multiple seq-one in animal) on SDS-PAGE under reducing (R) condition. The gel was stained with Coomassie Blue. The purity of the protein is greater than 90%



The purity of Anti-GPR73 / PROKR1 Reference Antibody (Multiple seq-one in animal) is more than 95% ,determined by SEC-HPLC.