

**Anti-Haptoglobin Reference Antibody (KHK patent anti-Haptoglobin)  
Recombinant Antibody  
Catalog # APR10929****Specification**

---

**Anti-Haptoglobin Reference Antibody (KHK patent anti-Haptoglobin) - Product Information**

Application	FC, Kinetics, Animal Model
Primary Accession	<a href="#">P00738</a>
Reactivity	Human, Mouse
Clonality	Monoclonal
Isotype	IgG1
Calculated MW	150 KDa

**Anti-Haptoglobin Reference Antibody (KHK patent anti-Haptoglobin) - Additional Information****Target/Specificity**

Haptoglobin

**Endotoxin**

&lt; 0.001EU/ µg,determined by LAL method.

**Conjugation**

Unconjugated

**Expression system**

CHO Cell

**Format**

Purified monoclonal antibody supplied in PBS, pH6.0, without preservative. This antibody is purified through a protein A column.

**Anti-Haptoglobin Reference Antibody (KHK patent anti-Haptoglobin) - Protein Information****Name** HP**Function**

As a result of hemolysis, hemoglobin is found to accumulate in the kidney and is secreted in the urine. Haptoglobin captures, and combines with free plasma hemoglobin to allow hepatic recycling of heme iron and to prevent kidney damage. Haptoglobin also acts as an antioxidant, has antibacterial activity, and plays a role in modulating many aspects of the acute phase response. Hemoglobin/haptoglobin complexes are rapidly cleared by the macrophage CD163 scavenger receptor expressed on the surface of liver Kupfer cells through an endocytic lysosomal degradation pathway.

**Cellular Location**

Secreted.

#### Tissue Location

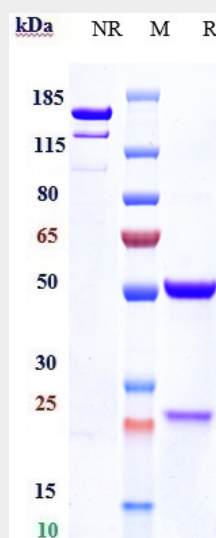
Expressed by the liver and secreted in plasma.

### Anti-Haptoglobin Reference Antibody (KHK patent anti-Haptoglobin) - Protocols

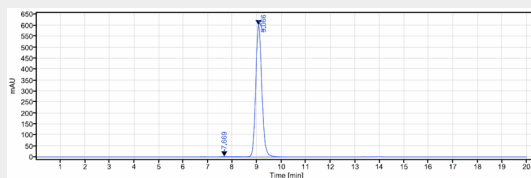
Provided below are standard protocols that you may find useful for product applications.

- [Western Blot](#)
- [Blocking Peptides](#)
- [Dot Blot](#)
- [Immunohistochemistry](#)
- [Immunofluorescence](#)
- [Immunoprecipitation](#)
- [Flow Cytometry](#)
- [Cell Culture](#)

### Anti-Haptoglobin Reference Antibody (KHK patent anti-Haptoglobin) - Images



Anti-Haptoglobin Reference Antibody (KHK patent anti-Haptoglobin) on SDS-PAGE under reducing (R) condition. The gel was stained with Coomassie Blue. The purity of the protein is greater than 95%



The purity of Anti-Haptoglobin Reference Antibody (KHK patent anti-Haptoglobin) is more than 95% ,determined by SEC-HPLC.