

**Anti-IFNa1 Reference Antibody (Chinese CDC patent anti-Interferon Alpha)  
Recombinant Antibody  
Catalog # APR10944****Specification**

---

**Anti-IFNa1 Reference Antibody (Chinese CDC patent anti-Interferon Alpha) - Product Information**

Application	FC, Kinetics, Animal Model
Primary Accession	<a href="#">P01562</a>
Reactivity	Human
Clonality	Monoclonal
Isotype	IgG1
Calculated MW	145 KDa

**Anti-IFNa1 Reference Antibody (Chinese CDC patent anti-Interferon Alpha) - Additional Information****Target/Specificity**

IFNa1

**Endotoxin**

&lt; 0.001EU/ µg,determined by LAL method.

**Conjugation**

Unconjugated

**Expression system**

CHO Cell

**Format**

Purified monoclonal antibody supplied in PBS, pH6.0, without preservative. This antibody is purified through a protein A column.

**Anti-IFNa1 Reference Antibody (Chinese CDC patent anti-Interferon Alpha) - Protein Information****Name** IFNA1**Function**

Produced by macrophages, IFN-alpha have antiviral activities. Interferon stimulates the production of two enzymes: a protein kinase and an oligoadenylate synthetase.

**Cellular Location**

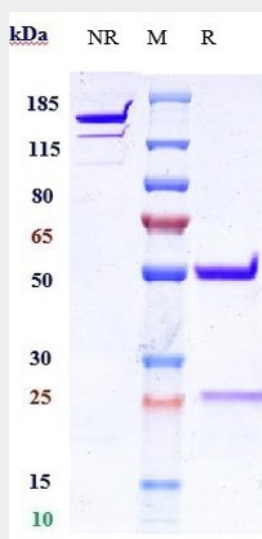
Secreted.

**Anti-IFNa1 Reference Antibody (Chinese CDC patent anti-Interferon Alpha) - Protocols**

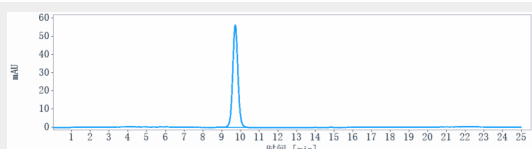
Provided below are standard protocols that you may find useful for product applications.

- [Western Blot](#)
- [Blocking Peptides](#)
- [Dot Blot](#)
- [Immunohistochemistry](#)
- [Immunofluorescence](#)
- [Immunoprecipitation](#)
- [Flow Cytometry](#)
- [Cell Culture](#)

#### Anti-IFN $\alpha$ 1 Reference Antibody (Chinese CDC patent anti-Interferon Alpha) - Images



Anti-IFN $\alpha$ 1 Reference Antibody (Chinese CDC patent anti-Interferon Alpha) on SDS-PAGE under reducing (R) condition. The gel was stained with Coomassie Blue. The purity of the protein is greater than 95%



The purity of Anti-IFN $\alpha$ 1 Reference Antibody (Chinese CDC patent anti-Interferon Alpha) is more than 95% ,determined by SEC-HPLC.