

Anti-IGF-2 Reference Antibody (DX-2647)
Recombinant Antibody
Catalog # APR10947**Specification**

Anti-IGF-2 Reference Antibody (DX-2647) - Product Information

Application	FC, Kinetics, Animal Model
Primary Accession	P01344
Reactivity	Human
Clonality	Monoclonal
Isotype	IgG1
Calculated MW	145.78 KDa

Anti-IGF-2 Reference Antibody (DX-2647) - Additional Information**Target/Specificity**
IGF-2**Endotoxin**
< 0.001EU/ µg,determined by LAL method.**Conjugation**
Unconjugated**Expression system**
CHO Cell**Format**
Purified monoclonal antibody supplied in PBS, pH6.0, without preservative.This antibody is purified through a protein A column.**Anti-IGF-2 Reference Antibody (DX-2647) - Protein Information****Name** IGF2 ([HGNC:5466](#))**Function**
The insulin-like growth factors possess growth-promoting activity (By similarity). Major fetal growth hormone in mammals. Plays a key role in regulating fetoplacental development. IGF2 is influenced by placental lactogen. Also involved in tissue differentiation. In adults, involved in glucose metabolism in adipose tissue, skeletal muscle and liver (Probable). Acts as a ligand for integrin which is required for IGF2 signaling (PubMed:28873464). Positively regulates myogenic transcription factor MYOD1 function by facilitating the recruitment of transcriptional coactivators, thereby controlling muscle terminal differentiation (By similarity). Inhibits myoblast differentiation and modulates metabolism via increasing the mitochondrial respiration rate (By similarity).**Cellular Location**
Secreted.

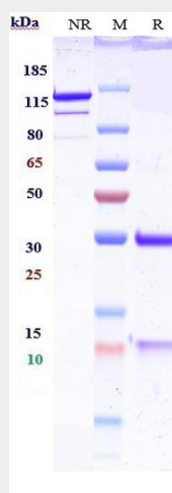
Tissue Location

Expressed in heart, placenta, lung, liver, muscle, kidney, tongue, limb, eye and pancreas.

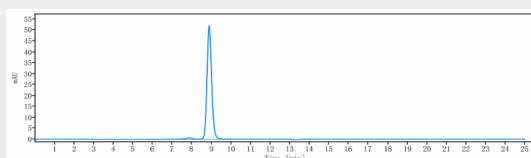
Anti-IGF-2 Reference Antibody (DX-2647) - Protocols

Provided below are standard protocols that you may find useful for product applications.

- [Western Blot](#)
- [Blocking Peptides](#)
- [Dot Blot](#)
- [Immunohistochemistry](#)
- [Immunofluorescence](#)
- [Immunoprecipitation](#)
- [Flow Cytometry](#)
- [Cell Culture](#)

Anti-IGF-2 Reference Antibody (DX-2647) - Images

Anti-IGF-2 Reference Antibody (DX-2647) on SDS-PAGE under reducing (R) condition. The gel was stained with Coomassie Blue. The purity of the protein is greater than 95%



The purity of Anti-IGF-2 Reference Antibody (DX-2647) is more than 95% ,determined by SEC-HPLC.