

**Anti-IL-25 Reference Antibody (Centocor patent anti-IL-25)
Recombinant Antibody
Catalog # APR10955****Specification****Anti-IL-25 Reference Antibody (Centocor patent anti-IL-25) - Product Information**

Application	FC, Kinetics, Animal Model
Primary Accession	O9H293
Reactivity	Human, Mouse
Clonality	Monoclonal
Isotype	IgG1
Calculated MW	145 KDa

Anti-IL-25 Reference Antibody (Centocor patent anti-IL-25) - Additional Information**Target/Specificity**
IL-25**Endotoxin**
< 0.001EU/ µg,determined by LAL method.**Conjugation**
Unconjugated**Expression system**
CHO Cell**Format**
Purified monoclonal antibody supplied in PBS, pH6.0, without preservative.This antibody is purified through a protein A column.**Anti-IL-25 Reference Antibody (Centocor patent anti-IL-25) - Protein Information****Name** IL25**Synonyms** IL17E**Function**
Cytokine produced by various cells such as eosinophils, T- helper type 2 (Th2) cells or epithelial cells that plays a role in internal safety of adaptive immune responses by regulating cytokine production (PubMed:15860795, PubMed:25821217). Promotes and augments T- helper type 2 responses locally or systemically (PubMed:25821217). Exerts its activity via its receptor composed of IL17RA and IL17RB for signal transduction (By similarity). In turn, stimulates the JAK2- STAT5A pathway and promotes the secretion of type-2 associated cytokines including IL4, IL9 and IL13 (PubMed:25821217). Also induces

the release of IL8, and IL6 from eosinophils through the combined activation of MAPK and NF-kappa-B pathways (PubMed:15860795). Inhibits the differentiation of T-helper (Th17) cells via the production of IL4, IL5 and IL13 (PubMed:11754819).

Cellular Location

Secreted.

Tissue Location

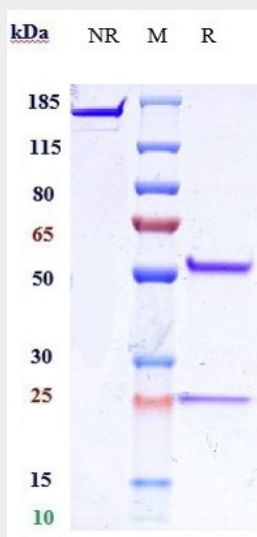
Expressed at low levels in several tissues, including brain, kidney, lung, prostate, testis, spinal cord, adrenal gland, and trachea

Anti-IL-25 Reference Antibody (Centocor patent anti-IL-25) - Protocols

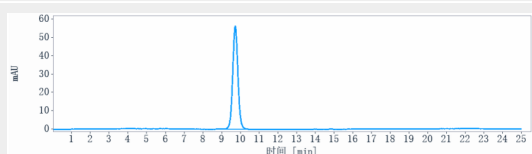
Provided below are standard protocols that you may find useful for product applications.

- [Western Blot](#)
- [Blocking Peptides](#)
- [Dot Blot](#)
- [Immunohistochemistry](#)
- [Immunofluorescence](#)
- [Immunoprecipitation](#)
- [Flow Cytometry](#)
- [Cell Culture](#)

Anti-IL-25 Reference Antibody (Centocor patent anti-IL-25) - Images



Anti-IL-25 Reference Antibody (Centocor patent anti-IL-25) on SDS-PAGE under reducing (R) condition. The gel was stained with Coomassie Blue. The purity of the protein is greater than 95%



The purity of Anti-IL-25 Reference Antibody (Centocor patent anti-IL-25) is more than 95%

,determined by SEC-HPLC.