

**Anti-KIR2DL1 / CD158a Reference Antibody (Innate patent anti-KIR2DL)
Recombinant Antibody
Catalog # APR10967****Specification**

Anti-KIR2DL1 / CD158a Reference Antibody (Innate patent anti-KIR2DL) - Product Information

Application	FC, Kinetics, Animal Model
Primary Accession	P43626
Reactivity	Human
Clonality	Monoclonal
Isotype	IgG1
Calculated MW	150 KDa

Anti-KIR2DL1 / CD158a Reference Antibody (Innate patent anti-KIR2DL) - Additional Information**Target/Specificity**

KIR2DL1 / CD158a

Endotoxin

< 0.001EU/ µg,determined by LAL method.

Conjugation

Unconjugated

Expression system

CHO Cell

Format

Purified monoclonal antibody supplied in PBS, pH6.0, without preservative.This antibody is purified through a protein A column.

Anti-KIR2DL1 / CD158a Reference Antibody (Innate patent anti-KIR2DL) - Protein Information**Name** KIR2DL1 ([HGNC:6329](#))**Synonyms** CD158A, NKAT1**Function**

Receptor on natural killer (NK) cells for some HLA-C alleles such as w4 and w6. Inhibits the activity of NK cells thus preventing cell lysis.

Cellular Location

Cell membrane; Single-pass type I membrane protein

Tissue Location

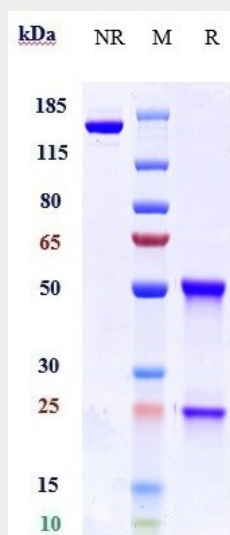
Expressed by NK cells.

Anti-KIR2DL1 / CD158a Reference Antibody (Innate patent anti-KIR2DL) - Protocols

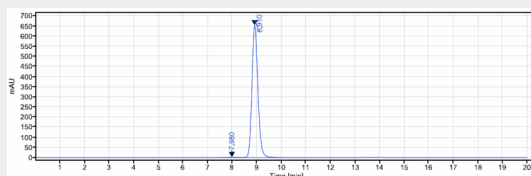
Provided below are standard protocols that you may find useful for product applications.

- [Western Blot](#)
- [Blocking Peptides](#)
- [Dot Blot](#)
- [Immunohistochemistry](#)
- [Immunofluorescence](#)
- [Immunoprecipitation](#)
- [Flow Cytometry](#)
- [Cell Culture](#)

Anti-KIR2DL1 / CD158a Reference Antibody (Innate patent anti-KIR2DL) - Images



Anti-KIR2DL1 / CD158a Reference Antibody (Innate patent anti-KIR2DL) on SDS-PAGE under reducing (R) condition. The gel was stained with Coomassie Blue. The purity of the protein is greater than 90%



The purity of Anti-KIR2DL1 / CD158a Reference Antibody (Innate patent anti-KIR2DL) is more than 95% ,determined by SEC-HPLC.