

**Anti-LAP Reference Antibody (Brigham and Womens anti-LAP)
Recombinant Antibody
Catalog # APR10971****Specification**

Anti-LAP Reference Antibody (Brigham and Womens anti-LAP) - Product Information

| | |
|-------------------|----------------------------|
| Application | FC, Kinetics, Animal Model |
| Primary Accession | P10600 |
| Reactivity | Rat, Human, Mouse |
| Clonality | Monoclonal |
| Isotype | IgG2 |
| Calculated MW | 150 KDa |

Anti-LAP Reference Antibody (Brigham and Womens anti-LAP) - Additional Information**Target/Specificity**

LAP

Endotoxin

< 0.001EU/ µg,determined by LAL method.

Conjugation

Unconjugated

Expression system

CHO Cell

Format

Purified monoclonal antibody supplied in PBS, pH6.0, without preservative.This antibody is purified through a protein A column.

Anti-LAP Reference Antibody (Brigham and Womens anti-LAP) - Protein Information**Name** TGFB3**Function**

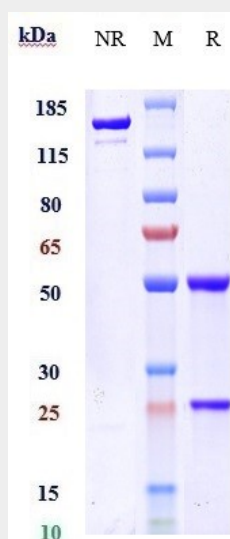
Transforming growth factor beta-3 proprotein: Precursor of the Latency-associated peptide (LAP) and Transforming growth factor beta-3 (TGF-beta-3) chains, which constitute the regulatory and active subunit of TGF-beta-3, respectively.

Cellular Location[Latency-associated peptide]: Secreted, extracellular space, extracellular matrix
{ECO:0000250|UniProtKB:P01137}**Anti-LAP Reference Antibody (Brigham and Womens anti-LAP) - Protocols**

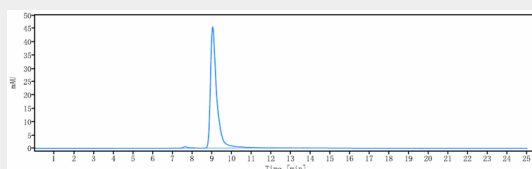
Provided below are standard protocols that you may find useful for product applications.

- [Western Blot](#)
- [Blocking Peptides](#)
- [Dot Blot](#)
- [Immunohistochemistry](#)
- [Immunofluorescence](#)
- [Immunoprecipitation](#)
- [Flow Cytometry](#)
- [Cell Culture](#)

Anti-LAP Reference Antibody (Brigham and Womens anti-LAP) - Images



Anti-LAP Reference Antibody (Brigham and Womens anti-LAP) on SDS-PAGE under reducing (R) condition. The gel was stained with Coomassie Blue. The purity of the protein is greater than 90%



The purity of Anti-LAP Reference Antibody (Brigham and Womens anti-LAP) is more than 95%, determined by SEC-HPLC.