

**Anti-MAGEA3 Reference Antibody (CT Atlantic patent anti-MAGE-A3)
Recombinant Antibody
Catalog # APR10974****Specification****Anti-MAGEA3 Reference Antibody (CT Atlantic patent anti-MAGE-A3) - Product Information**

Application	FC, E, FTA
Primary Accession	P43357
Reactivity	Human, Mouse
Clonality	Monoclonal
Isotype	IgG1
Calculated MW	150 KDa

Anti-MAGEA3 Reference Antibody (CT Atlantic patent anti-MAGE-A3) - Additional Information**Target/Specificity**
MAGEA3**Endotoxin**
< 0.001EU/ µg,determined by LAL method.**Conjugation**
Unconjugated**Expression system**
CHO Cell**Format**
Purified monoclonal antibody supplied in PBS, pH6.0, without preservative.This antibody is purified through a protein A column.**Storage**
-80°C for 2 years under sterile conditions □ -20°C for 1 year under sterile conditions □ Avoid repeated freeze-thaw cycles.**Anti-MAGEA3 Reference Antibody (CT Atlantic patent anti-MAGE-A3) - Protein Information****Name** MAGEA3 {ECO:0000303|PubMed:29779948, ECO:0000312|HGNC:HGNC:6801}**Function**
Activator of ubiquitin ligase activity of RING-type zinc finger-containing E3 ubiquitin-protein ligases that acts as a repressor of autophagy (PubMed:20864041, PubMed:31267705). May enhance ubiquitin ligase activity of TRIM28 and stimulate p53/TP53 ubiquitination by TRIM28. Proposed to

act through recruitment and/or stabilization of the Ubl-conjugating enzyme (E2) at the E3:substrate complex (PubMed:17942928, PubMed:20864041). May play a role in embryonal development and tumor transformation or aspects of tumor progression (PubMed:17942928, PubMed:20864041). In vitro promotes cell viability in melanoma cell lines (PubMed:17942928). Antigen recognized on a melanoma by autologous cytolytic T-lymphocytes (PubMed:8113684).

Tissue Location

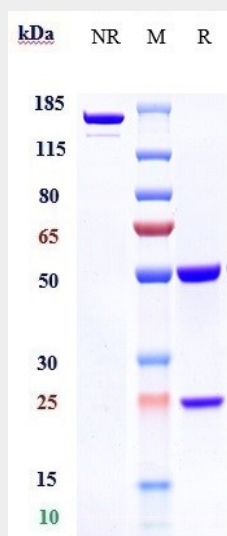
Expressed in many tumors of several types, such as melanoma, head and neck squamous cell carcinoma, lung carcinoma and breast carcinoma, but not in normal tissues except for testes and placenta. Never expressed in kidney tumors, Leukemias and lymphomas

Anti-MAGEA3 Reference Antibody (CT Atlantic patent anti-MAGE-A3) - Protocols

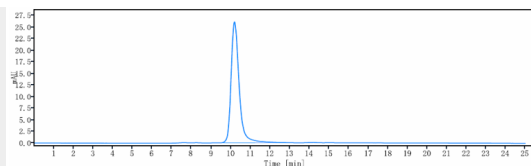
Provided below are standard protocols that you may find useful for product applications.

- [Western Blot](#)
- [Blocking Peptides](#)
- [Dot Blot](#)
- [Immunohistochemistry](#)
- [Immunofluorescence](#)
- [Immunoprecipitation](#)
- [Flow Cytometry](#)
- [Cell Culture](#)

Anti-MAGEA3 Reference Antibody (CT Atlantic patent anti-MAGE-A3) - Images



Anti-MAGEA3 Reference Antibody (CT Atlantic patent anti-MAGE-A3) on SDS-PAGE under reducing (R) condition. The gel was stained with Coomassie Blue. The purity of the protein is greater than 90%



The purity of Anti-MAGEA3 Reference Antibody (CT Atlantic patent anti-MAGE-A3) is more than 95% ,determined by SEC-HPLC.