

**Anti-Mesothelin Reference Antibody (NIH patent anti-Mesothelin)  
Recombinant Antibody  
Catalog # APR10977****Specification**

---

**Anti-Mesothelin Reference Antibody (NIH patent anti-Mesothelin) - Product Information**

Application	FC, Kinetics, Animal Model
Primary Accession	<a href="#">Q13421</a>
Reactivity	Human, Mouse
Clonality	Monoclonal
Isotype	IgG1
Calculated MW	150 KDa

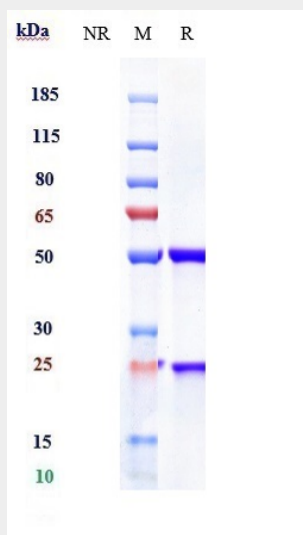
**Anti-Mesothelin Reference Antibody (NIH patent anti-Mesothelin) - Additional Information****Target/Specificity**  
Mesothelin**Endotoxin**  
< 0.001EU/ µg,determined by LAL method.**Conjugation**  
Unconjugated**Expression system**  
CHO Cell**Format**  
Purified monoclonal antibody supplied in PBS, pH6.0, without preservative.This antibody is purified through a protein A column.**Anti-Mesothelin Reference Antibody (NIH patent anti-Mesothelin) - Protein Information****Name** MSLN**Synonyms** MPF**Function**  
Membrane-anchored forms may play a role in cellular adhesion.**Cellular Location**  
Cell membrane; Lipid-anchor, GPI-anchor. Golgi apparatus [Isoform 3]: Secreted.**Tissue Location**  
Expressed in lung. Expressed at low levels in heart, placenta and kidney. Expressed in mesothelial cells. Highly expressed in mesotheliomas, ovarian cancers, and some squamous cell carcinomas (at protein level).

## Anti-Mesothelin Reference Antibody (NIH patent anti-Mesothelin) - Protocols

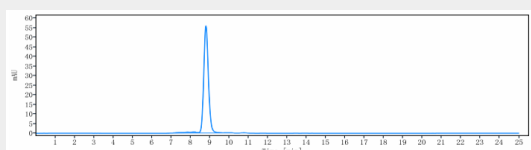
Provided below are standard protocols that you may find useful for product applications.

- [Western Blot](#)
- [Blocking Peptides](#)
- [Dot Blot](#)
- [Immunohistochemistry](#)
- [Immunofluorescence](#)
- [Immunoprecipitation](#)
- [Flow Cytometry](#)
- [Cell Culture](#)

## Anti-Mesothelin Reference Antibody (NIH patent anti-Mesothelin) - Images



Anti-Mesothelin Reference Antibody (NIH patent anti-Mesothelin) on SDS-PAGE under reducing (R) condition. The gel was stained with Coomassie Blue. The purity of the protein is greater than 90%



The purity of Anti-Mesothelin Reference Antibody (NIH patent anti-Mesothelin) is more than 95%, determined by SEC-HPLC.