

**Anti-MRC2 / CD280 Reference Antibody (Quark Patent Anti-Endo180)
Recombinant Antibody
Catalog # APR10982****Specification**

Anti-MRC2 / CD280 Reference Antibody (Quark Patent Anti-Endo180) - Product Information

Application	FC, Kinetics, Animal Model
Primary Accession	Q9UBG0
Reactivity	Human
Clonality	Monoclonal
Isotype	IgG1
Calculated MW	145.42 KDa

Anti-MRC2 / CD280 Reference Antibody (Quark Patent Anti-Endo180) - Additional Information**Target/Specificity**

MRC2 / CD280

Endotoxin

< 0.001EU/ µg,determined by LAL method.

Conjugation

Unconjugated

Expression system

CHO Cell

Format

Purified monoclonal antibody supplied in PBS, pH6.0, without preservative. This antibody is purified through a protein A column.

Anti-MRC2 / CD280 Reference Antibody (Quark Patent Anti-Endo180) - Protein Information**Name** MRC2**Synonyms** CLEC13E, ENDO180, KIAA0709, UPARAP**Function**

May play a role as endocytotic lectin receptor displaying calcium-dependent lectin activity. Internalizes glycosylated ligands from the extracellular space for release in an endosomal compartment via clathrin-mediated endocytosis. May be involved in plasminogen activation system controlling the extracellular level of PLAU/PLAUR, and thus may regulate protease activity at the cell surface. May contribute to cellular uptake, remodeling and degradation of extracellular collagen matrices. May play a role during cancer progression as well as in other chronic tissue destructive diseases acting on collagen turnover. May participate in remodeling of extracellular

matrix cooperating with the matrix metalloproteinases (MMPs).

Cellular Location

Membrane; Single-pass type I membrane protein.

Tissue Location

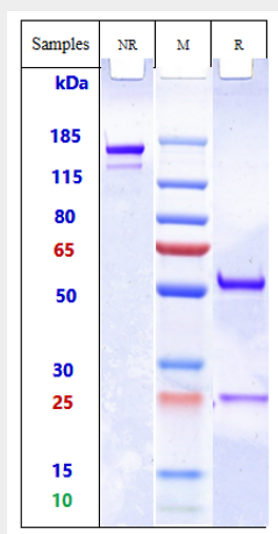
Ubiquitous with low expression in brain, placenta, lung, kidney, pancreas, spleen, thymus and colon. Expressed in endothelial cells, fibroblasts and macrophages. Highly expressed in fetal lung and kidney.

Anti-MRC2 / CD280 Reference Antibody (Quark Patent Anti-Endo180) - Protocols

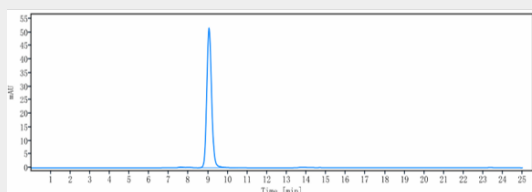
Provided below are standard protocols that you may find useful for product applications.

- [Western Blot](#)
- [Blocking Peptides](#)
- [Dot Blot](#)
- [Immunohistochemistry](#)
- [Immunofluorescence](#)
- [Immunoprecipitation](#)
- [Flow Cytometry](#)
- [Cell Culture](#)

Anti-MRC2 / CD280 Reference Antibody (Quark Patent Anti-Endo180) - Images



Anti-MRC2 / CD280 Reference Antibody (Quark Patent Anti-Endo180) on SDS-PAGE under reducing (R) condition. The gel was stained with Coomassie Blue. The purity of the protein is greater than 95%



The purity of Anti-MRC2 / CD280 Reference Antibody (Quark Patent Anti-Endo180) is more than

95% ,determined by SEC-HPLC.