

**Anti-MUC16 Reference Antibody (oregovomab-MMAE)
Recombinant Antibody
Catalog # APR10987****Specification**

Anti-MUC16 Reference Antibody (oregovomab-MMAE) - Product Information

| | |
|-------------------|----------------------------|
| Application | FC, Kinetics, Animal Model |
| Primary Accession | Q8WXI7 |
| Reactivity | Human |
| Clonality | Monoclonal |
| Isotype | IgG1 |
| Calculated MW | 150 KDa |

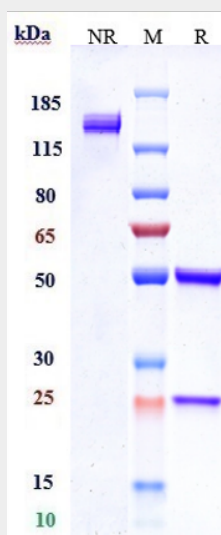
Anti-MUC16 Reference Antibody (oregovomab-MMAE) - Additional Information**Target/Specificity**
MUC16**Endotoxin**
< 0.001EU/ µg,determined by LAL method.**Conjugation**
Unconjugated**Expression system**
CHO Cell**Format**
Purified monoclonal antibody supplied in PBS, pH6.0, without preservative.This antibody is purified through a protein A column.**Anti-MUC16 Reference Antibody (oregovomab-MMAE) - Protein Information****Name** MUC16 ([HGNC:15582](#))**Function**
Thought to provide a protective, lubricating barrier against particles and infectious agents at mucosal surfaces.**Cellular Location**
Cell membrane; Single-pass type I membrane protein. Secreted, extracellular space. Note=May be liberated into the extracellular space following the phosphorylation of the intracellular C-terminus which induces the proteolytic cleavage and liberation of the extracellular domain**Tissue Location**
Expressed in corneal and conjunctival epithelia (at protein level). Overexpressed in ovarian carcinomas and ovarian low malignant potential (LMP) tumors as compared to the expression in normal ovarian tissue and ovarian adenomas

Anti-MUC16 Reference Antibody (oregovomab-MMAE) - Protocols

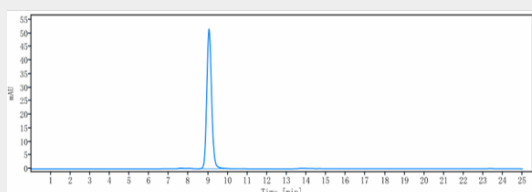
Provided below are standard protocols that you may find useful for product applications.

- [Western Blot](#)
- [Blocking Peptides](#)
- [Dot Blot](#)
- [Immunohistochemistry](#)
- [Immunofluorescence](#)
- [Immunoprecipitation](#)
- [Flow Cytometry](#)
- [Cell Culture](#)

Anti-MUC16 Reference Antibody (oregovomab-MMAE) - Images



Anti-MUC16 Reference Antibody (oregovomab-MMAE) on SDS-PAGE under reducing (R) condition. The gel was stained with Coomassie Blue. The purity of the protein is greater than 90%



The purity of Anti-MUC16 Reference Antibody (oregovomab-MMAE) is more than 95%, determined by SEC-HPLC.