

**Anti-PACAP38 Reference Antibody (Lilly patent anti-PACAP)  
Recombinant Antibody  
Catalog # APR10998****Specification****Anti-PACAP38 Reference Antibody (Lilly patent anti-PACAP) - Product Information**

Application	FC, Kinetics, Animal Model
Primary Accession	<a href="#">P18509</a>
Reactivity	Rat, Human
Clonality	Monoclonal
Isotype	IgG1
Calculated MW	150 KDa

**Anti-PACAP38 Reference Antibody (Lilly patent anti-PACAP) - Additional Information****Target/Specificity**  
PACAP38**Endotoxin**  
< 0.001EU/ µg,determined by LAL method.**Conjugation**  
Unconjugated**Expression system**  
CHO Cell**Format**  
Purified monoclonal antibody supplied in PBS, pH6.0, without preservative.This antibody is purified through a protein A column.**Anti-PACAP38 Reference Antibody (Lilly patent anti-PACAP) - Protein Information****Name** ADCYAP1 ([HGNC:241](#))**Function**  
PACAP is a neuropeptide involved in diverse array of physiological processes through activating the PACAP subfamily of class B1 G protein-coupled receptors: VIP receptor 1 (VIPR1), VIP receptor 2 (VIPR2), and PACAP type I receptor (ADCYAP1R1) (PubMed:<a href="http://www.uniprot.org/citations/11175907" target="\_blank">11175907</a>, PubMed:<a href="http://www.uniprot.org/citations/23800469" target="\_blank">23800469</a>, PubMed:<a href="http://www.uniprot.org/citations/32047270" target="\_blank">32047270</a>, PubMed:<a href="http://www.uniprot.org/citations/36385145" target="\_blank">36385145</a>). Exerts neuroprotective and general cytoprotective effects due to anti- apoptotic, anti-inflammatory, and antioxidant actions (PubMed:<a href="http://www.uniprot.org/citations/23800469" target="\_blank">23800469</a>). Promotes neuron projection development through the RAPGEF2/Rap1/B-Raf/ERK pathway (PubMed:<a href="http://www.uniprot.org/citations/23800469" target="\_blank">23800469</a>). In chromaffin cells, induces long-lasting increase of intracellular

calcium concentrations and neuroendocrine secretion (By similarity). Involved in the control of glucose homeostasis, induces insulin secretion by pancreatic beta cells (By similarity). PACAP exists in two bioactive forms from proteolysis of the same precursor protein, PACAP27 and PACAP38, which differ by eleven amino acid residues in the C-terminus (PubMed:<a href="http://www.uniprot.org/citations/32047270" target="\_blank">32047270</a>).

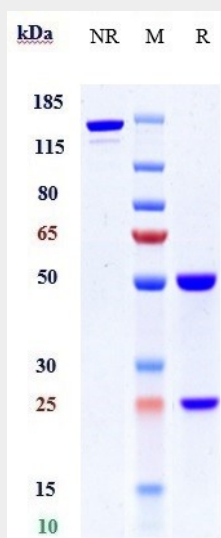
**Cellular Location**  
Secreted.

### Anti-PACAP38 Reference Antibody (Lilly patent anti-PACAP) - Protocols

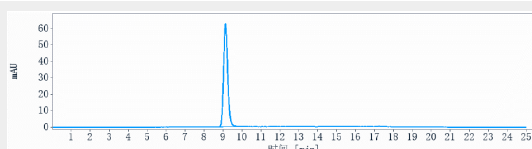
Provided below are standard protocols that you may find useful for product applications.

- [Western Blot](#)
- [Blocking Peptides](#)
- [Dot Blot](#)
- [Immunohistochemistry](#)
- [Immunofluorescence](#)
- [Immunoprecipitation](#)
- [Flow Cytometry](#)
- [Cell Culture](#)

### Anti-PACAP38 Reference Antibody (Lilly patent anti-PACAP) - Images



Anti-PACAP38 Reference Antibody (Lilly patent anti-PACAP) on SDS-PAGE under reducing (R) condition. The gel was stained with Coomassie Blue. The purity of the protein is greater than 90%



The purity of Anti-PACAP38 Reference Antibody (Lilly patent anti-PACAP) is more than 95%, determined by SEC-HPLC.