

**Anti-PCLA Reference Antibody (U.Penn. patent anti-PCLA)
Recombinant Antibody
Catalog # APR11002****Specification**

Anti-PCLA Reference Antibody (U.Penn. patent anti-PCLA) - Product Information

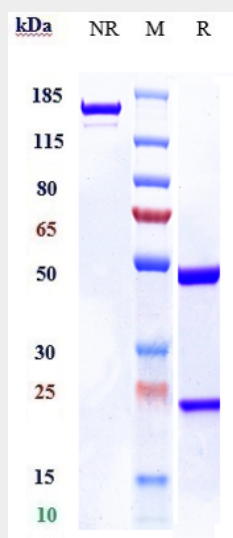
Application	FC, Kinetics, Animal Model
Primary Accession	NA
Reactivity	Human
Clonality	Monoclonal
Isotype	IgG1
Calculated MW	150 KDa

Anti-PCLA Reference Antibody (U.Penn. patent anti-PCLA) - Additional Information**Target/Specificity**
PCLA**Endotoxin**
< 0.001EU/ µg,determined by LAL method.**Conjugation**
Unconjugated**Expression system**
CHO Cell**Format**
Purified monoclonal antibody supplied in PBS, pH6.0, without preservative.This antibody is purified through a protein A column.**Anti-PCLA Reference Antibody (U.Penn. patent anti-PCLA) - Protein Information****Anti-PCLA Reference Antibody (U.Penn. patent anti-PCLA) - Protocols**

Provided below are standard protocols that you may find useful for product applications.

- [Western Blot](#)
- [Blocking Peptides](#)
- [Dot Blot](#)
- [Immunohistochemistry](#)
- [Immunofluorescence](#)
- [Immunoprecipitation](#)
- [Flow Cytometry](#)
- [Cell Culture](#)

Anti-PCLA Reference Antibody (U.Penn. patent anti-PCLA) - Images



Anti-PCLA Reference Antibody (U.Penn. patent anti-PCLA) on SDS-PAGE under reducing (R) condition. The gel was stained with Coomassie Blue. The purity of the protein is greater than 90%