

**Anti-PLA2G1B Reference Antibody (Diaccurate patent anti-sPLA2-GIB)
Recombinant Antibody
Catalog # APR11012****Specification**

Anti-PLA2G1B Reference Antibody (Diaccurate patent anti-sPLA2-GIB) - Product Information

Application	FC, Kinetics, Animal Model
Primary Accession	P04054
Reactivity	Human, Mouse
Clonality	Monoclonal
Isotype	IgG1
Calculated MW	150 KDa

Anti-PLA2G1B Reference Antibody (Diaccurate patent anti-sPLA2-GIB) - Additional Information**Target/Specificity**
PLA2G1B

Endotoxin
< 0.001EU/ µg,determined by LAL method.

Conjugation
Unconjugated

Expression system
CHO Cell

Format
Purified monoclonal antibody supplied in PBS, pH6.0, without preservative.This antibody is purified through a protein A column.

Anti-PLA2G1B Reference Antibody (Diaccurate patent anti-sPLA2-GIB) - Protein Information

Name PLA2G1B

Synonyms PLA2, PLA2A, PPLA2

Function
Secretory calcium-dependent phospholipase A2 that primarily targets dietary phospholipids in the intestinal tract (PubMed:10681567, PubMed:1420353, PubMed:17603006). Hydrolyzes the ester bond of the fatty acyl group attached at sn-2 position of phospholipids (phospholipase A2 activity) with preference for phosphatidylethanolamines and phosphatidylglycerols over phosphatidylcholines (PubMed:10681567, PubMed:1420353, PubMed:17603006). May play a role in the biosynthesis of N-acyl ethanolamines that regulate energy metabolism and inflammation in the intestinal tract. Hydrolyzes N-acyl phosphatidylethanolamines to N-acyl lysophosphatidylethanolamines, which are further cleaved by a lysophospholipase D to release N-acyl ethanolamines (By similarity). May act in an autocrine and paracrine manner (PubMed:25335547, PubMed:7721806). Upon binding to the PLA2R1 receptor can regulate podocyte survival and glomerular homeostasis (PubMed:25335547). Has anti-helminth activity in a process regulated by gut microbiota. Upon helminth infection of intestinal epithelia, directly affects phosphatidylethanolamine contents in the membrane of helminth larvae, likely controlling an array of phospholipid-mediated cellular processes such as membrane fusion and cell division while providing for better immune recognition, ultimately reducing larvae integrity and infectivity (By similarity).

Cellular Location

Secreted. Note=Secreted from pancreatic acinar cells in its inactive form

Tissue Location

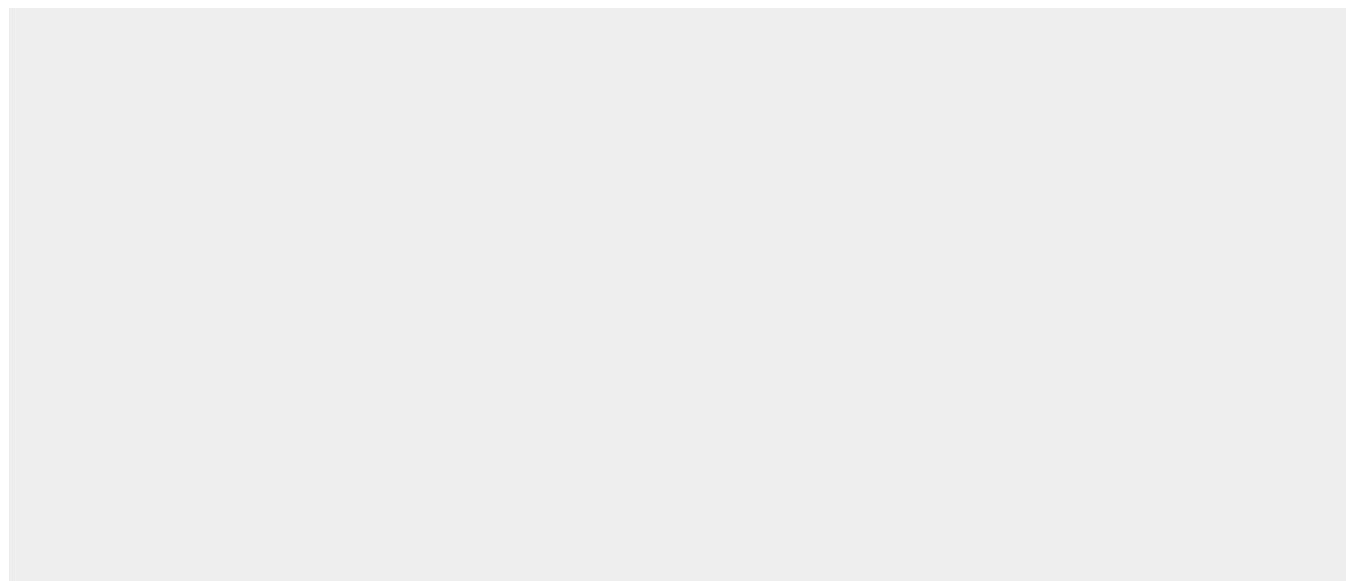
Selectively expressed in pancreas, lung, liver and kidney. Also detected at lower levels in ovary and testis

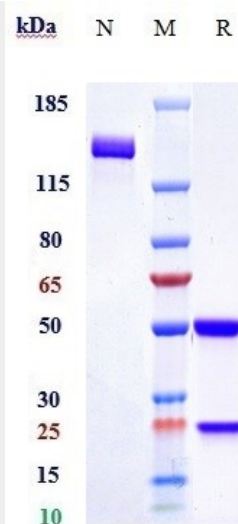
Anti-PLA2G1B Reference Antibody (Diaccurate patent anti-sPLA2-GIB) - Protocols

Provided below are standard protocols that you may find useful for product applications.

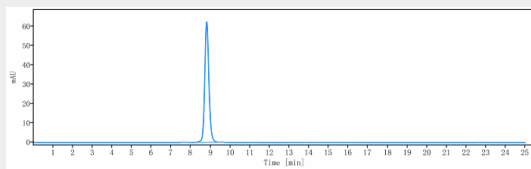
- [Western Blot](#)
- [Blocking Peptides](#)
- [Dot Blot](#)
- [Immunohistochemistry](#)
- [Immunofluorescence](#)
- [Immunoprecipitation](#)
- [Flow Cytometry](#)
- [Cell Culture](#)

Anti-PLA2G1B Reference Antibody (Diaccurate patent anti-sPLA2-GIB) - Images





Anti-PLA2G1B Reference Antibody (Diaccurate patent anti-sPLA2-GIB) on SDS-PAGE under reducing (R) condition. The gel was stained with Coomassie Blue. The purity of the protein is greater than 90%



The purity of Anti-PLA2G1B Reference Antibody (Diaccurate patent anti-sPLA2-GIB) is more than 95% ,determined by SEC-HPLC.