

**Anti-RAMP3 Reference Antibody (Medella patent anti-RAMP-3)  
Recombinant Antibody  
Catalog # APR11021****Specification**

---

**Anti-RAMP3 Reference Antibody (Medella patent anti-RAMP-3) - Product Information**

Application	FC, E, FTA
Primary Accession	<a href="#">O60896</a>
Reactivity	Human
Clonality	Monoclonal
Isotype	IgG1
Calculated MW	150 KDa

**Anti-RAMP3 Reference Antibody (Medella patent anti-RAMP-3) - Additional Information****Target/Specificity**  
RAMP3**Endotoxin**  
< 0.001EU/ µg,determined by LAL method.**Conjugation**  
Unconjugated**Expression system**  
CHO Cell**Format**  
Purified monoclonal antibody supplied in PBS, pH6.0, without preservative.This antibody is purified through a protein A column.**Storage**  
-80°C for 2 years under sterile conditions □ -20°C for 1 year under sterile conditions □ Avoid repeated freeze-thaw cycles.**Anti-RAMP3 Reference Antibody (Medella patent anti-RAMP-3) - Protein Information****Name** RAMP3**Function**  
Plays a role in cardioprotection by reducing cardiac hypertrophy and perivascular fibrosis in a GPER1-dependent manner. Transports the calcitonin gene-related peptide type 1 receptor (CALCRL) and GPER1 to the plasma membrane. Acts as a receptor for adrenomedullin (AM) together with CALCRL.**Cellular Location**  
Cell membrane; Single-pass type I membrane protein Membrane; Single-pass type I membrane protein. Note=Moves from intracellular puncta to the plasma membrane in a RAMP3-dependent

manner

#### Tissue Location

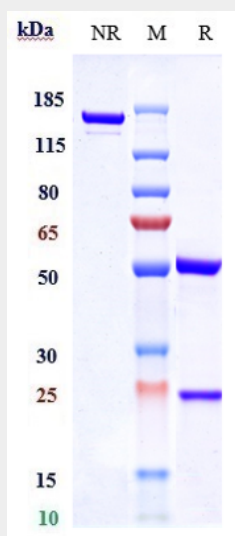
Strongly expressed in lung, breast, immune system and fetal tissues.

#### Anti-RAMP3 Reference Antibody (Medella patent anti-RAMP-3) - Protocols

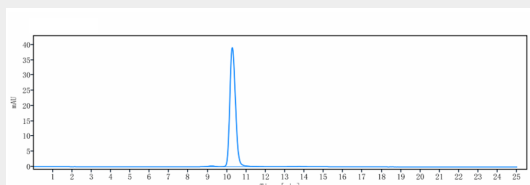
Provided below are standard protocols that you may find useful for product applications.

- [Western Blot](#)
- [Blocking Peptides](#)
- [Dot Blot](#)
- [Immunohistochemistry](#)
- [Immunofluorescence](#)
- [Immunoprecipitation](#)
- [Flow Cytometry](#)
- [Cell Culture](#)

#### Anti-RAMP3 Reference Antibody (Medella patent anti-RAMP-3) - Images



Anti-RAMP3 Reference Antibody (Medella patent anti-RAMP-3) on SDS-PAGE under reducing (R) condition. The gel was stained with Coomassie Blue. The purity of the protein is greater than 90%



The purity of Anti-RAMP3 Reference Antibody (Medella patent anti-RAMP-3) is more than 95%, determined by SEC-HPLC.