

**Anti-RHD / CD240d Reference Antibody (LFB Anti-RhD)
Recombinant Antibody
Catalog # APR11022****Specification**

Anti-RHD / CD240d Reference Antibody (LFB Anti-RhD) - Product Information

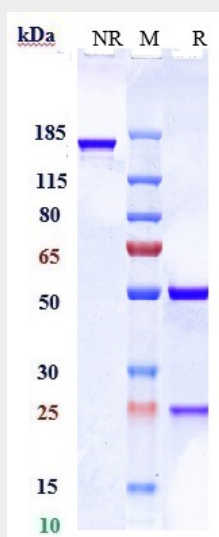
Application	FC, Kinetics, Animal Model
Primary Accession	Q02161
Reactivity	Human
Clonality	Monoclonal
Isotype	IgG1
Calculated MW	146.4 KDa

Anti-RHD / CD240d Reference Antibody (LFB Anti-RhD) - Additional Information**Target/Specificity**
RHD / CD240d**Endotoxin**
< 0.001EU/ µg,determined by LAL method.**Conjugation**
Unconjugated**Expression system**
CHO Cell**Format**
Purified monoclonal antibody supplied in PBS, pH6.0, without preservative.This antibody is purified through a protein A column.**Anti-RHD / CD240d Reference Antibody (LFB Anti-RhD) - Protein Information****Name** RHD**Function**
May be part of an oligomeric complex which is likely to have a transport or channel function in the erythrocyte membrane.**Cellular Location**
Cell membrane; Multi-pass membrane protein**Tissue Location**
Restricted to tissues or cell lines expressing erythroid characters**Anti-RHD / CD240d Reference Antibody (LFB Anti-RhD) - Protocols**

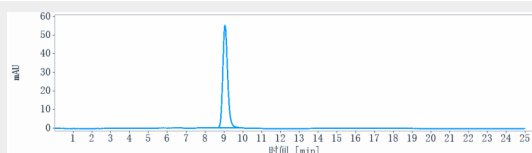
Provided below are standard protocols that you may find useful for product applications.

- [Western Blot](#)
- [Blocking Peptides](#)
- [Dot Blot](#)
- [Immunohistochemistry](#)
- [Immunofluorescence](#)
- [Immunoprecipitation](#)
- [Flow Cytometry](#)
- [Cell Culture](#)

Anti-RHD / CD240d Reference Antibody (LFB Anti-RhD) - Images



Anti-RHD / CD240d Reference Antibody (LFB Anti-RhD) on SDS-PAGE under reducing (R) condition. The gel was stained with Coomassie Blue. The purity of the protein is greater than 95%



The purity of Anti-RHD / CD240d Reference Antibody (LFB Anti-RhD) is more than 98.9%, determined by SEC-HPLC.