

**Anti-Siglec-2 / CD22 Reference Antibody (NCI m971)**  
**Recombinant Antibody**  
**Catalog # APR11035****Specification**

---

**Anti-Siglec-2 / CD22 Reference Antibody (NCI m971) - Product Information**

Application	FC, E, FTA
Primary Accession	<a href="#">P20273</a>
Reactivity	Human
Clonality	Monoclonal
Isotype	IgG1
Calculated MW	146.64 KDa

**Anti-Siglec-2 / CD22 Reference Antibody (NCI m971) - Additional Information****Target/Specificity**  
Siglec-2 / CD22**Endotoxin**  
< 0.001EU/ µg,determined by LAL method.**Conjugation**  
Unconjugated**Expression system**  
CHO Cell**Format**  
Purified monoclonal antibody supplied in PBS, pH6.0, without preservative.This antibody is purified through a protein A column.**Storage**  
-80°C for 2 years under sterile conditions □ -20°C for 1 year under sterile conditions □ Avoid repeated freeze-thaw cycles.**Anti-Siglec-2 / CD22 Reference Antibody (NCI m971) - Protein Information****Name** CD22 {ECO:0000303|PubMed:1691828, ECO:0000312|HGNC:HGNC:1643}**Function**  
Mediates B-cell B-cell interactions. May be involved in the localization of B-cells in lymphoid tissues. Binds sialylated glycoproteins; one of which is CD45. Preferentially binds to alpha-2,6-linked sialic acid. The sialic acid recognition site can be masked by cis interactions with sialic acids on the same cell surface. Upon ligand induced tyrosine phosphorylation in the immune response seems to be involved in regulation of B-cell antigen receptor signaling. Plays a role in positive regulation through interaction with Src family tyrosine kinases and may also act as an inhibitory receptor by recruiting cytoplasmic phosphatases via their SH2 domains that block signal transduction through dephosphorylation of signaling molecules.

**Cellular Location**

Cell membrane; Single-pass type I membrane protein

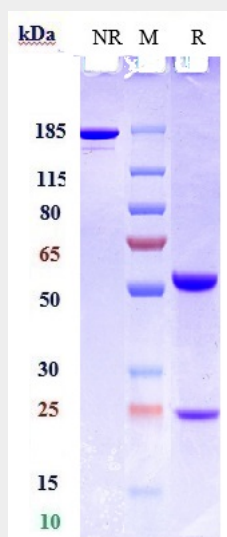
**Tissue Location**

B-lymphocytes.

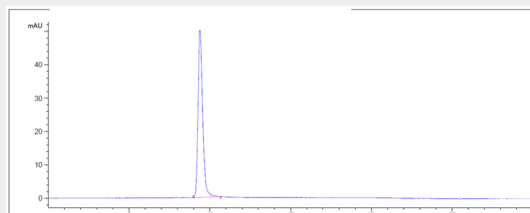
**Anti-Siglec-2 / CD22 Reference Antibody (NCI m971) - Protocols**

Provided below are standard protocols that you may find useful for product applications.

- [Western Blot](#)
- [Blocking Peptides](#)
- [Dot Blot](#)
- [Immunohistochemistry](#)
- [Immunofluorescence](#)
- [Immunoprecipitation](#)
- [Flow Cytometry](#)
- [Cell Culture](#)

**Anti-Siglec-2 / CD22 Reference Antibody (NCI m971) - Images**

Anti-Siglec-2 / CD22 Reference Antibody (NCI m971) on SDS-PAGE under reducing (R) condition. The gel was stained with Coomassie Blue. The purity of the protein is greater than 95%



The purity of Anti-Siglec-2 / CD22 Reference Antibody (NCI m971) is more than 100% ,determined by SEC-HPLC.