

**Anti-TAT226 Reference Antibody (Genentech patent anti-TAT226)  
Recombinant Antibody  
Catalog # APR11041****Specification**

---

**Anti-TAT226 Reference Antibody (Genentech patent anti-TAT226) - Product Information**

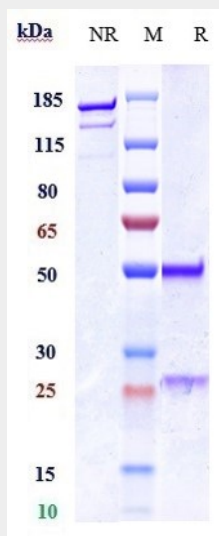
Application	FC, Kinetics, Animal Model
Primary Accession	<a href="#">NA</a>
Reactivity	Human
Clonality	Monoclonal
Isotype	IgG1
Calculated MW	150 KDa

**Anti-TAT226 Reference Antibody (Genentech patent anti-TAT226) - Additional Information****Target/Specificity**  
TAT226**Endotoxin**  
< 0.001EU/ µg,determined by LAL method.**Conjugation**  
Unconjugated**Expression system**  
CHO Cell**Format**  
Purified monoclonal antibody supplied in PBS, pH6.0, without preservative.This antibody is purified through a protein A column.**Anti-TAT226 Reference Antibody (Genentech patent anti-TAT226) - Protein Information****Anti-TAT226 Reference Antibody (Genentech patent anti-TAT226) - Protocols**

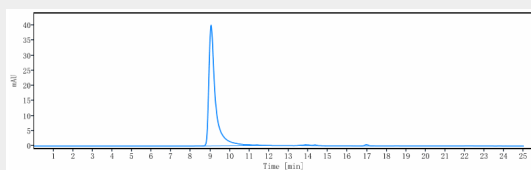
Provided below are standard protocols that you may find useful for product applications.

- [Western Blot](#)
- [Blocking Peptides](#)
- [Dot Blot](#)
- [Immunohistochemistry](#)
- [Immunofluorescence](#)
- [Immunoprecipitation](#)
- [Flow Cytometry](#)
- [Cell Culture](#)

## Anti-TAT226 Reference Antibody (Genentech patent anti-TAT226) - Images



Anti-TAT226 Reference Antibody (Genentech patent anti-TAT226) on SDS-PAGE under reducing (R) condition. The gel was stained with Coomassie Blue. The purity of the protein is greater than 90%



The purity of Anti-TAT226 Reference Antibody (Genentech patent anti-TAT226) is more than 95%, determined by SEC-HPLC.