

**Anti-TM4SF1 Reference Antibody (Beth Israel Patent Anti-TM4SF1)
Recombinant Antibody
Catalog # APR11048****Specification**

Anti-TM4SF1 Reference Antibody (Beth Israel Patent Anti-TM4SF1) - Product Information

Application	FC, E, FTA
Primary Accession	P30408
Reactivity	Human
Clonality	Monoclonal
Isotype	IgG1
Calculated MW	150 KDa

Anti-TM4SF1 Reference Antibody (Beth Israel Patent Anti-TM4SF1) - Additional Information**Target/Specificity**
TM4SF1**Endotoxin**
< 0.001EU/ µg,determined by LAL method.**Conjugation**
Unconjugated**Expression system**
CHO Cell**Format**
Purified monoclonal antibody supplied in PBS, pH6.0, without preservative.This antibody is purified through a protein A column.**Storage**
-80°C for 2 years under sterile conditions □ -20°C for 1 year under sterile conditions □ Avoid repeated freeze-thaw cycles.**Anti-TM4SF1 Reference Antibody (Beth Israel Patent Anti-TM4SF1) - Protein Information****Name** TM4SF1**Synonyms** M3S1, TAAL6**Cellular Location**
Membrane; Multi-pass membrane protein. Note=Colocalizes with SDCBP2 in the apical region of the cell (PubMed:11102519).**Tissue Location**
Highly expressed in lung, breast, colon and ovarian carcinomas. It is also present on some normal

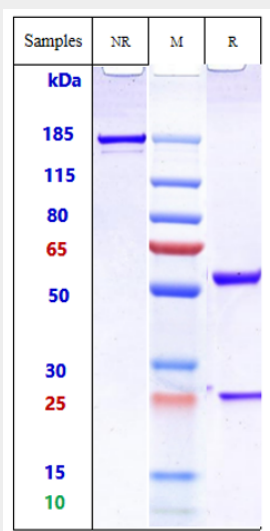
cells, endothelial cells in particular

Anti-TM4SF1 Reference Antibody (Beth Israel Patent Anti-TM4SF1) - Protocols

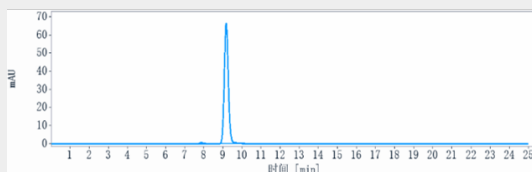
Provided below are standard protocols that you may find useful for product applications.

- [Western Blot](#)
- [Blocking Peptides](#)
- [Dot Blot](#)
- [Immunohistochemistry](#)
- [Immunofluorescence](#)
- [Immunoprecipitation](#)
- [Flow Cytometry](#)
- [Cell Culture](#)

Anti-TM4SF1 Reference Antibody (Beth Israel Patent Anti-TM4SF1) - Images



Anti-TM4SF1 Reference Antibody (Beth Israel Patent Anti-TM4SF1) on SDS-PAGE under reducing (R) condition. The gel was stained with Coomassie Blue. The purity of the protein is greater than 90%



The purity of Anti-TM4SF1 Reference Antibody (Beth Israel Patent Anti-TM4SF1) is more than 95%, determined by SEC-HPLC.