

**Anti-TMEFF1 / Tomoregulin-1 Reference Antibody (Bluefin patent anti-TMEFF1)  
Recombinant Antibody  
Catalog # APR11049****Specification****Anti-TMEFF1 / Tomoregulin-1 Reference Antibody (Bluefin patent anti-TMEFF1) - Product Information**

Application	FC, Kinetics, Animal Model
Primary Accession	<a href="#">Q8IYR6</a>
Reactivity	Human, Mouse
Clonality	Monoclonal
Isotype	IgG1
Calculated MW	150 KDa

**Anti-TMEFF1 / Tomoregulin-1 Reference Antibody (Bluefin patent anti-TMEFF1) - Additional Information****Target/Specificity**

TMEFF1 / Tomoregulin-1

**Endotoxin**

&lt; 0.001EU/ µg,determined by LAL method.

**Conjugation**

Unconjugated

**Expression system**

CHO Cell

**Format**

Purified monoclonal antibody supplied in PBS, pH6.0, without preservative.This antibody is purified through a protein A column.

**Anti-TMEFF1 / Tomoregulin-1 Reference Antibody (Bluefin patent anti-TMEFF1) - Protein Information****Name** TEFF1**Function**

Neuron-specific restriction factor that prevents herpes simplex virus 1 (HHV-1) infection in the brain by blocking viral entry (PubMed:<a href="http://www.uniprot.org/citations/39048823" target="\_blank">39048823</a>, PubMed:<a href="http://www.uniprot.org/citations/39048830" target="\_blank">39048830</a>). Also able to restrict herpes simplex virus 2 (HHV-2) infection, although to a lesser extent (PubMed:<a href="http://www.uniprot.org/citations/39048823" target="\_blank">39048823</a>). Acts by preventing the association between the viral glycoprotein D (gD) and its cell surface receptor NECTIN1, thereby inhibiting fusion of the virus and the cell membrane (PubMed:<a href="http://www.uniprot.org/citations/39048823" target="\_blank">39048823</a>, PubMed:<a href="http://www.uniprot.org/citations/39048830" target="\_blank">39048830</a>).

target="\_blank">39048830</a>). Also able to prevent the association between the viral glycoprotein B (gB) and MYH9/NMMHC-IIA and MYH10/NMMHC-IIB receptors (PubMed:<a href="http://www.uniprot.org/citations/39048823" target="\_blank">39048823</a>). May be a tumor suppressor in brain cancers (PubMed:<a href="http://www.uniprot.org/citations/12743596" target="\_blank">12743596</a>).

#### Cellular Location

Cell membrane; Single-pass type I membrane protein

#### Tissue Location

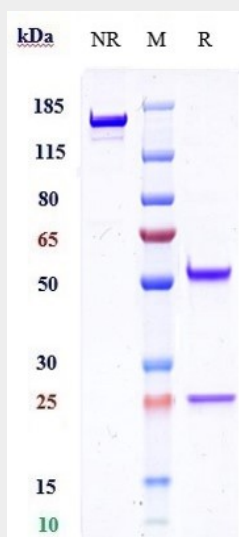
Expressed predominantly in brain, and at lower levels in heart, placenta and skeletal muscle (PubMed:12743596). Down-regulated in brain tumors as compared to control brain tissues (PubMed:12743596).

### Anti-TMEFF1 / Tomoregulin-1 Reference Antibody (Bluefin patent anti-TMEFF1) - Protocols

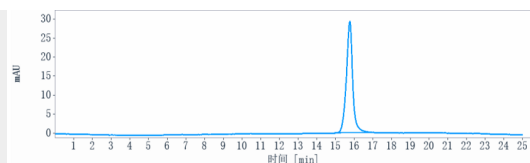
Provided below are standard protocols that you may find useful for product applications.

- [Western Blot](#)
- [Blocking Peptides](#)
- [Dot Blot](#)
- [Immunohistochemistry](#)
- [Immunofluorescence](#)
- [Immunoprecipitation](#)
- [Flow Cytometry](#)
- [Cell Culture](#)

### Anti-TMEFF1 / Tomoregulin-1 Reference Antibody (Bluefin patent anti-TMEFF1) - Images



Anti-TMEFF1 / Tomoregulin-1 Reference Antibody (Bluefin patent anti-TMEFF1) on SDS-PAGE under reducing (R) condition. The gel was stained with Coomassie Blue. The purity of the protein is greater than 95%



The purity of Anti-TMEFF1 / Tomoregulin-1 Reference Antibody (Bluefin patent anti-TMEFF1) is more than 95% ,determined by SEC-HPLC.