

**Anti-TMEFF2 Reference Antibody (Janssen patent anti-TMEFF2)
Recombinant Antibody
Catalog # APR11050****Specification**

Anti-TMEFF2 Reference Antibody (Janssen patent anti-TMEFF2) - Product Information

Application	FC, Kinetics, Animal Model
Primary Accession	Q9UIK5
Reactivity	Human
Clonality	Monoclonal
Isotype	IgG1
Calculated MW	150 KDa

Anti-TMEFF2 Reference Antibody (Janssen patent anti-TMEFF2) - Additional Information**Target/Specificity**
TMEFF2**Endotoxin**
< 0.001EU/ µg,determined by LAL method.**Conjugation**
Unconjugated**Expression system**
CHO Cell**Format**
Purified monoclonal antibody supplied in PBS, pH6.0, without preservative.This antibody is purified through a protein A column.**Anti-TMEFF2 Reference Antibody (Janssen patent anti-TMEFF2) - Protein Information****Name** TMEFF2**Synonyms** HPP1, TENB2, TPEF**Function**
May be a survival factor for hippocampal and mesencephalic neurons. The shedded form up-regulates cancer cell proliferation, probably by promoting ERK1/2 phosphorylation.**Cellular Location**
[Isoform 1]: Membrane; Single-pass type I membrane protein [Isoform 3]: Secreted.**Tissue Location**
Highly expressed in adult and fetal brain, spinal cord and prostate. Expressed in all brain regions except the pituitary gland, with highest levels in amygdala and corpus callosum. Expressed in the pericryptal myofibroblasts and other stromal cells of normal colonic mucosa. Expressed in prostate

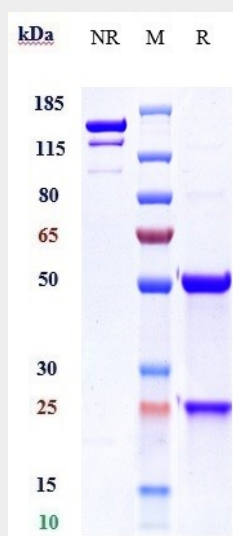
carcinoma. Down-regulated in colorectal cancer. Present in Alzheimer disease plaques (at protein level). Isoform 3 is expressed weakly in testis and at high levels in normal and cancerous prostate.

Anti-TMEFF2 Reference Antibody (Janssen patent anti-TMEFF2) - Protocols

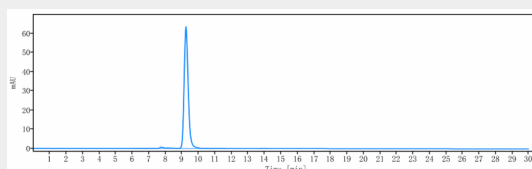
Provided below are standard protocols that you may find useful for product applications.

- [Western Blot](#)
- [Blocking Peptides](#)
- [Dot Blot](#)
- [Immunohistochemistry](#)
- [Immunofluorescence](#)
- [Immunoprecipitation](#)
- [Flow Cytometry](#)
- [Cell Culture](#)

Anti-TMEFF2 Reference Antibody (Janssen patent anti-TMEFF2) - Images



Anti-TMEFF2 Reference Antibody (Janssen patent anti-TMEFF2) on SDS-PAGE under reducing (R) condition. The gel was stained with Coomassie Blue. The purity of the protein is greater than 90%



The purity of Anti-TMEFF2 Reference Antibody (Janssen patent anti-TMEFF2) is more than 95%, determined by SEC-HPLC.