

**Anti-VCAM1 / CD106 Reference Antibody (Hanwha patent anti-VCAM-1)
Recombinant Antibody
Catalog # APR11069****Specification**

Anti-VCAM1 / CD106 Reference Antibody (Hanwha patent anti-VCAM-1) - Product Information

Application	FC, Kinetics, Animal Model
Primary Accession	P19320
Reactivity	Rat, Human, Mouse
Clonality	Monoclonal
Isotype	IgG2SA
Calculated MW	143.4 KDa

Anti-VCAM1 / CD106 Reference Antibody (Hanwha patent anti-VCAM-1) - Additional Information**Target/Specificity**

VCAM1 / CD106

Endotoxin

< 0.001EU/ µg,determined by LAL method.

Conjugation

Unconjugated

Expression system

CHO Cell

Format

Purified monoclonal antibody supplied in PBS, pH6.0, without preservative. This antibody is purified through a protein A column.

Anti-VCAM1 / CD106 Reference Antibody (Hanwha patent anti-VCAM-1) - Protein Information**Name** VCAM1**Function**

Cell adhesion glycoprotein predominantly expressed on the surface of endothelial cells that plays an important role in immune surveillance and inflammation (PubMed:31310649). Acts as a major regulator of leukocyte adhesion to the endothelium through interaction with different types of integrins (PubMed:10209034). During inflammatory responses, binds ligands on the surface of activated endothelial cells to initiate the activation of calcium channels and the plasma membrane-associated small GTPase RAC1 leading to leukocyte transendothelial migration (PubMed:22970700).

Also serves as a quality- control checkpoint for entry into bone marrow by providing a 'don't-eat-me' stamping in the context of major histocompatibility complex (MHC) class-I presentation (PubMed:35210567).

Cellular Location

[Vascular cell adhesion protein 1]: Cell membrane; Single-pass type I membrane protein

Tissue Location

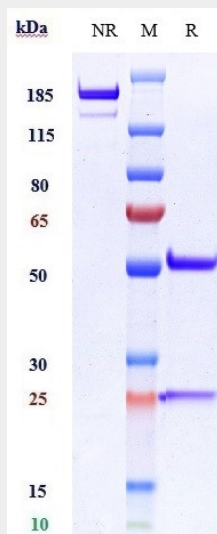
Expressed on inflamed vascular endothelium, as well as on macrophage-like and dendritic cell types in both normal and inflamed tissue

Anti-VCAM1 / CD106 Reference Antibody (Hanwha patent anti-VCAM-1) - Protocols

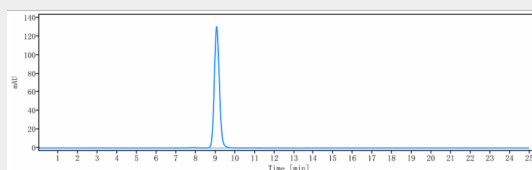
Provided below are standard protocols that you may find useful for product applications.

- [Western Blot](#)
- [Blocking Peptides](#)
- [Dot Blot](#)
- [Immunohistochemistry](#)
- [Immunofluorescence](#)
- [Immunoprecipitation](#)
- [Flow Cytometry](#)
- [Cell Culture](#)

Anti-VCAM1 / CD106 Reference Antibody (Hanwha patent anti-VCAM-1) - Images



Anti-VCAM1 / CD106 Reference Antibody (Hanwha patent anti-VCAM-1) on SDS-PAGE under reducing (R) condition. The gel was stained with Coomassie Blue. The purity of the protein is greater than 95%



The purity of Anti-VCAM1 / CD106 Reference Antibody (Hanwha patent anti-VCAM-1) is more than

95% ,determined by SEC-HPLC.