

**Anti-VEGF Reference Antibody (Domantis patent anti-VEGF)  
Recombinant Antibody  
Catalog # APR11071****Specification**

---

**Anti-VEGF Reference Antibody (Domantis patent anti-VEGF) - Product Information**

Application	FC, Kinetics, Animal Model
Primary Accession	<a href="#">P15692</a>
Reactivity	Human
Clonality	Monoclonal
Isotype	IgG1
Calculated MW	144.86 KDa

**Anti-VEGF Reference Antibody (Domantis patent anti-VEGF) - Additional Information****Target/Specificity**  
VEGF**Endotoxin**  
< 0.001EU/ µg,determined by LAL method.**Conjugation**  
Unconjugated**Expression system**  
CHO Cell**Format**  
Purified monoclonal antibody supplied in PBS, pH6.0, without preservative.This antibody is purified through a protein A column.**Anti-VEGF Reference Antibody (Domantis patent anti-VEGF) - Protein Information****Name** VEGFA**Synonyms** VEGF**Function**  
[N-VEGF]: Participates in the induction of key genes involved in the response to hypoxia and in the induction of angiogenesis such as HIF1A (PubMed:<a href="http://www.uniprot.org/citations/35455969" target="\_blank">35455969</a>). Involved in protecting cells from hypoxia- mediated cell death (By similarity).**Cellular Location**  
[N-VEGF]: Cytoplasm. Nucleus. Note=Cytoplasmic in normoxic conditions and localizes to the nucleus under hypoxic conditions [Isoform L-VEGF189]: Endoplasmic reticulum. Golgi apparatus. Secreted, extracellular space, extracellular matrix [Isoform VEGF165]: Secreted

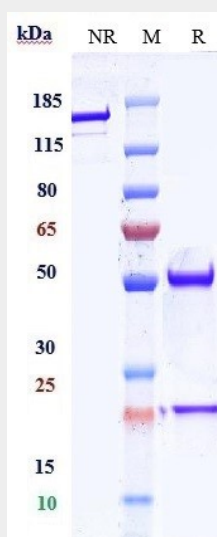
**Tissue Location**

Higher expression in pituitary tumors than the pituitary gland. [Isoform VEGF165]: Widely expressed. [Isoform VEGF206]: Not widely expressed.

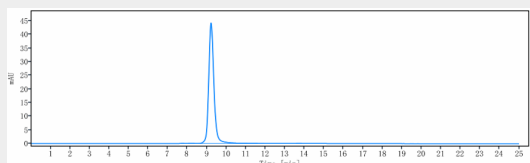
**Anti-VEGF Reference Antibody (Domantis patent anti-VEGF) - Protocols**

Provided below are standard protocols that you may find useful for product applications.

- [Western Blot](#)
- [Blocking Peptides](#)
- [Dot Blot](#)
- [Immunohistochemistry](#)
- [Immunofluorescence](#)
- [Immunoprecipitation](#)
- [Flow Cytometry](#)
- [Cell Culture](#)

**Anti-VEGF Reference Antibody (Domantis patent anti-VEGF) - Images**

Anti-VEGF Reference Antibody (Domantis patent anti-VEGF) on SDS-PAGE under reducing (R) condition. The gel was stained with Coomassie Blue. The purity of the protein is greater than 95%



The purity of Anti-VEGF Reference Antibody (Domantis patent anti-VEGF) is more than 95%, determined by SEC-HPLC.