

**Anti-vWF Reference Antibody (INSERM patent anti-vWF)
Recombinant Antibody
Catalog # APR11076****Specification**

Anti-vWF Reference Antibody (INSERM patent anti-vWF) - Product Information

Application	FC, E, FTA
Primary Accession	P04275
Reactivity	Human, Mouse
Clonality	Monoclonal
Isotype	IgG1
Calculated MW	150 KDa

Anti-vWF Reference Antibody (INSERM patent anti-vWF) - Additional Information**Target/Specificity**
vWF**Endotoxin**

< 0.001EU/ µg,determined by LAL method.

Conjugation

Unconjugated

Expression system

CHO Cell

Format

Purified monoclonal antibody supplied in PBS, pH6.0, without preservative.This antibody is purified through a protein A column.

Storage

-80°C for 2 years under sterile conditions □ -20°C for 1 year under sterile conditions □ Avoid repeated freeze-thaw cycles.

Anti-vWF Reference Antibody (INSERM patent anti-vWF) - Protein Information**Name** VWF**Synonyms** F8VWF**Function**

Important in the maintenance of hemostasis, it promotes adhesion of platelets to the sites of vascular injury by forming a molecular bridge between sub-endothelial collagen matrix and platelet- surface receptor complex GPIb-IX-V. Also acts as a chaperone for coagulation factor VIII, delivering it to the site of injury, stabilizing its heterodimeric structure and protecting it from premature clearance from plasma.

Cellular Location

Secreted. Secreted, extracellular space, extracellular matrix. Note=Localized to storage granules

Tissue Location

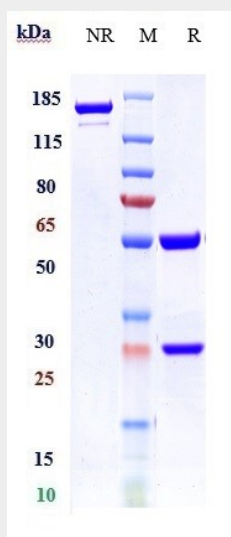
Plasma.

Anti-vWF Reference Antibody (INSERM patent anti-vWF) - Protocols

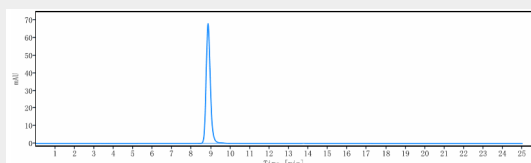
Provided below are standard protocols that you may find useful for product applications.

- [Western Blot](#)
- [Blocking Peptides](#)
- [Dot Blot](#)
- [Immunohistochemistry](#)
- [Immunofluorescence](#)
- [Immunoprecipitation](#)
- [Flow Cytometry](#)
- [Cell Culture](#)

Anti-vWF Reference Antibody (INSERM patent anti-vWF) - Images



Anti-vWF Reference Antibody (INSERM patent anti-vWF) on SDS-PAGE under reducing (R) condition. The gel was stained with Coomassie Blue. The purity of the protein is greater than 90%



The purity of Anti-vWF Reference Antibody (INSERM patent anti-vWF) is more than 95%, determined by SEC-HPLC.