

**GFR alpha 3 Antibody**  
**Catalog # ASC10020****Specification**

---

**GFR alpha 3 Antibody - Product Information**

Application	IF, IHC
Primary Accession	<a href="#">O35118</a>
Other Accession	<a href="#">NP_034410</a> , <a href="#">14587</a>
Reactivity	Human, Mouse, Rat
Host	Rabbit
Clonality	Polyclonal
Isotype	IgG
Calculated MW	Predicted: 44 kDa

Application Notes	<b>Observed: 43 kDa KDa</b> GFR alpha 3 antibody can be used for detection of GFR alpha 3 expression by Western blot at 0.5 µg/mL. Antibody can also be used for immunohistochemistry starting at 5 µg/mL. For immunofluorescence start at 5 µg/mL.
-------------------	--

**GFR alpha 3 Antibody - Additional Information**

Gene ID **14587**

**Other Names**

GFR alpha 3 Antibody: Y15110, GFRalpha3, GDNF family receptor alpha-3, GDNF receptor alpha-3, glial cell line derived neurotrophic factor family receptor alpha 3

**Target/Specificity**

GFR alpha 3 antibody was raised against a 14 amino acid peptide near the center of murine GFR alpha 3. The immunogen is located within the last 50 amino acids of GFR alpha 3.

**Reconstitution & Storage**

GFR alpha 3 antibody can be stored at 4°C for three months and -20°C, stable for up to one year. As with all antibodies care should be taken to avoid repeated freeze thaw cycles. Antibodies should not be exposed to prolonged high temperatures.

**Precautions**

GFR alpha 3 Antibody is for research use only and not for use in diagnostic or therapeutic procedures.

**GFR alpha 3 Antibody - Protein Information**

**Name** Gfra3

**Function**

Receptor for the glial cell line-derived neurotrophic factor, artemin. Mediates the artemin-induced

autophosphorylation and activation of the RET receptor tyrosine kinase (By similarity).

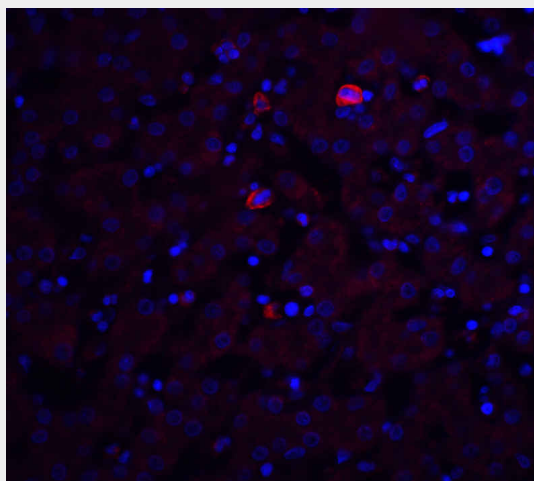
**Cellular Location**

Cell membrane; Lipid-anchor, GPI- anchor

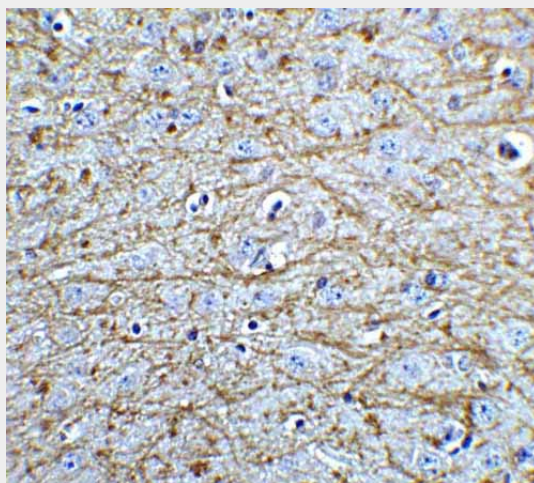
**GFR alpha 3 Antibody - Protocols**

Provided below are standard protocols that you may find useful for product applications.

- [Western Blot](#)
- [Blocking Peptides](#)
- [Dot Blot](#)
- [Immunohistochemistry](#)
- [Immunofluorescence](#)
- [Immunoprecipitation](#)
- [Flow Cytometry](#)
- [Cell Culture](#)

**GFR alpha 3 Antibody - Images**

Immunofluorescence of Trophinin in mouse liver tissue with Trophinin antibody at 20 µg/ml.



Immunohistochemistry of SOX2 in mouse brain tissue with SOX2 Antibody at 5 µg/mL.

### **GFR alpha 3 Antibody - Background**

GFR alpha 3 Antibody: Members of the glial cell line-derived neurotrophic factor (GDNF) family, including GDNF and neurturin (NTN) play essential roles in the control of vertebrate neuron survival and differentiation. A new member of the GDNF family was recently identified and designated persephin. Physiological responses to these neurotrophic factors require two receptor subunits, the novel glycosylphosphatidylinositol linked protein GFR $\alpha$  and Ret receptor tyrosine kinase GFRbeta. Following the findings of GFR $\alpha$ -1 and -2, a novel receptor in GFR $\alpha$  family was identified from human and mouse and designated GFR $\alpha$ -3. GFR $\alpha$ -3 binds persephin, thus, persephin, GFR $\alpha$ -3, and Ret PTK form a complex to transduce persephin signal and to mediate persephin function.

### **GFR alpha 3 Antibody - References**

Milbrandt J, de Sauvage FJ, Fahrner TJ, et al. Persephin, a novel neurotrophic factor related to GDNF and neurturin. *Neuron* 1998; 20:245-253.  
Nomenclature Committee. Nomenclature of GPI-linked receptors for the GDNF ligand family. GFR $\alpha$ . *Neuron* 1997; 19:485.  
Jing S, Yu Y, Fang M, et al. GFR $\alpha$ -2 and GFR $\alpha$ -3 are two new receptors for ligands of the GDNF family. *J. Biol. Chem.* 1997; 272:33111-7.  
Baloh RH, Gorodinsky A, Golden JP, et al. GFR $\alpha$ 3 is an orphan member of the GDNF/neurturin/persephin receptor family. *Proc. Natl. Acad. Sci. USA* 1998; 95:5801-6.