

Bim Antibody
Catalog # ASC10046**Specification**

Bim Antibody - Product Information

Application	WB, IHC-P, E
Primary Accession	O43521
Other Accession	O43521 , 18202042
Reactivity	Human, Mouse, Rat
Host	Rabbit
Clonality	Polyclonal
Isotype	IgG
Calculated MW	23 kDa KDa
Application Notes	Bim antibody can be used for detection of Bim by Western blot at 1 µg/mL. A 23 kDa band can be detected. Antibody can also be used for immunohistochemistry starting at 20 µg/mL.

Bim Antibody - Additional InformationGene ID **10018****Other Names**

Bim Antibody: BAM, BIM, BOD, Bcl-2-like protein 11, Bcl2-interacting mediator of cell death, Bcl2-L-11, BCL2-like 11 (apoptosis facilitator)

Target/Specificity

BCL2L11;

Reconstitution & Storage

Bim antibody can be stored at 4°C for three months and -20°C, stable for up to one year. As with all antibodies care should be taken to avoid repeated freeze thaw cycles. Antibodies should not be exposed to prolonged high temperatures.

Precautions

Bim Antibody is for research use only and not for use in diagnostic or therapeutic procedures.

Bim Antibody - Protein Information**Name** BCL2L11**Synonyms** BIM**Function**

Induces apoptosis and anoikis. Isoform BimL is more potent than isoform BimEL. Isoform Bim-alpha1, isoform Bim-alpha2 and isoform Bim-alpha3 induce apoptosis, although less potent than isoform BimEL, isoform BimL and isoform BimS. Isoform Bim-gamma induces apoptosis. Isoform Bim-alpha3 induces apoptosis possibly through a caspase- mediated pathway. Isoform

BimAC and isoform BimABC lack the ability to induce apoptosis.

Cellular Location

Endomembrane system; Peripheral membrane protein. Note=Associated with intracytoplasmic membranes. [Isoform BimL]: Mitochondrion. [Isoform Bim-alpha1]: Mitochondrion.

Tissue Location

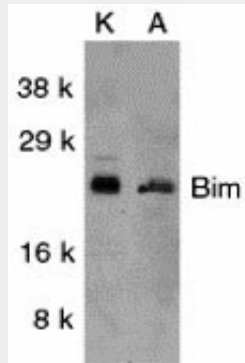
Isoform BimEL, isoform BimL and isoform BimS are the predominant isoforms and are widely expressed with tissue-specific variation. Isoform Bim-gamma is most abundantly expressed in small intestine and colon, and in lower levels in spleen, prostate, testis, heart, liver and kidney.

Bim Antibody - Protocols

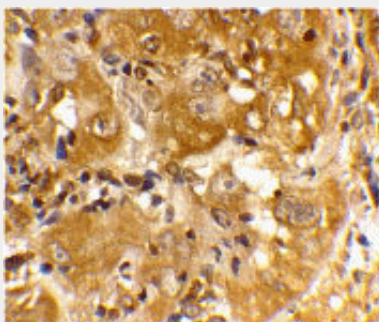
Provided below are standard protocols that you may find useful for product applications.

- [Western Blot](#)
- [Blocking Peptides](#)
- [Dot Blot](#)
- [Immunohistochemistry](#)
- [Immunofluorescence](#)
- [Immunoprecipitation](#)
- [Flow Cytometry](#)
- [Cell Culture](#)

Bim Antibody - Images



Western blot analysis of Bim in K562 (K) and A549 (A) whole cell lysates with Bim antibody at 1 µg/mL.



Immunohistochemistry of Bim in human skin cancer cells with Bim antibody at 20 µg/mL.

Bim Antibody - Background

Bim Antibody: Members in the Bcl-2 family are critical regulators of apoptosis by either inhibiting or promoting cell death. Bcl-2 homology 3 (BH3) domain is a potent death domain. BH3 domain containing pro-apoptotic proteins, including Bad, Bax, Bid, Bik, and Hrk, form a growing subclass of the Bcl-2 family. A novel BH3 domain containing protein was recently identified and designated Bim or BOD in human, mouse and rat. Bim/BOD interacts with diverse members in the pro-survival Bcl-2 sub-family including Bcl-2, Bcl-xL and Bcl-w. Bim/BOD induces apoptosis. The messenger RNA of Bim is ubiquitously expressed in multiple tissues and cell lines.

Bim Antibody - References

O'Connor L, Strasser A, O'Reilly LA, et al. Bim: a novel member of the Bcl-2 family that promotes apoptosis. EMBO J. 1998; 17:384-395.

Hsu SY, Lin P, and Hsueh AJ BOD (Bcl-2-related ovarian death gene) is an ovarian BH3 domain-containing proapoptotic Bcl-2 protein capable of dimerization with diverse antiapoptotic Bcl-2 members. Mol. Endocrinol. 1998; 12:1432-40.